

Forklift - Still R20-18



Forklift - Still R20-18

WKH.3601



1800kg



4150mm



Elektric



7437

Brand

Still

Model

R20-18

Year

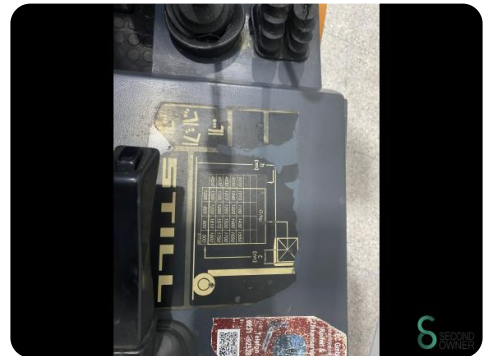
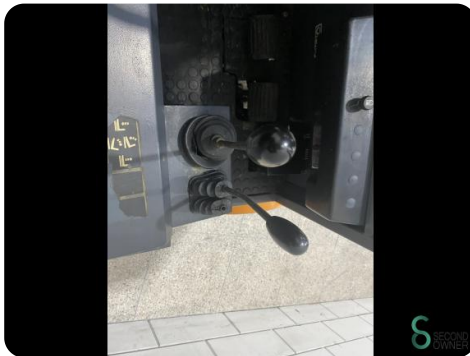
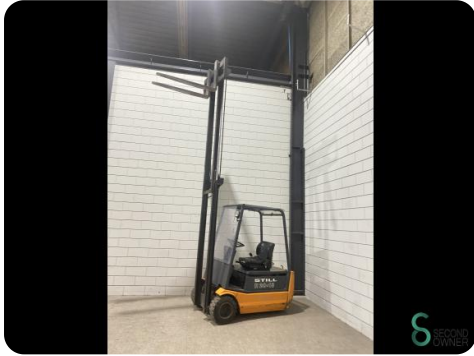
Specifications

Drive	Elektric
Capacity	750Ah
Brand/Type	Fiamm 6 PZS
Battery voltage	48V
Battery year of construction	2009
Options	Work lights

[For all product specifications click here](#)

Dimensions

Length	2000 mm
Width	1100 mm
Height	2600 mm
Weight	3500 kg





Havenweg 6
6603AS Wijchen

T: +31 644300552
E: tess@secondowner.com
W: <https://secondowner.com>