

## Forklift - Still R60-50



## Forklift - Still R60-50

WKH.4783



Elektric



3300mm



5000kg



9600



2007

**Brand** Still

**Model** R60-50

**Year** 2007

### Specifications

**Drive** Elektric

**Capacity** 930Ah

**Battery voltage** 80V

**Inspection valid until** 04.2025

**Options** Work lights

**Maximum fork width** 950mm

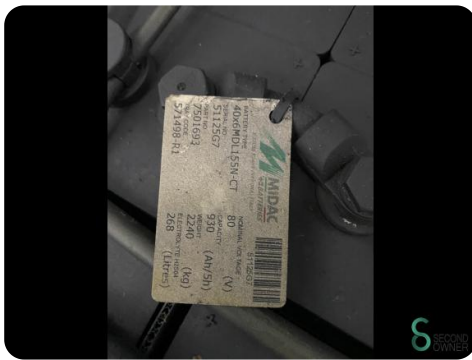
### Dimensions

**Length** 3000

**Width** 1400

**Height** 2420

**Weight** 6504





Havenweg 6  
6603AS Wijchen

**T:** +31 6 11462913  
**E:** [Koen@secondowner.com](mailto:Koen@secondowner.com)  
**W:** <https://secondowner.com>

