

## Forklift - Still RX 70-20/600 T



## Forklift - Still RX 70-20/600 T

WKH5.268



LPG



3670mm



2000kg



13164



2018

<b>Brand</b>	Still
<b>Model</b>	RX 70-20/600 T
<b>Year</b>	2018

### Specifications

<b>Drive</b>	LPG
<b>Motor brand</b>	Still
<b>Inspection valid until</b>	06.2025
<b>Options</b>	Work lights, Verwarming, Full cabin
<b>Overhead clearance</b>	2480mm
<b>Attachment</b>	Side-shift

### Dimensions

<b>Length</b>	2600
<b>Width</b>	1200
<b>Height</b>	2480
<b>Weight</b>	4029

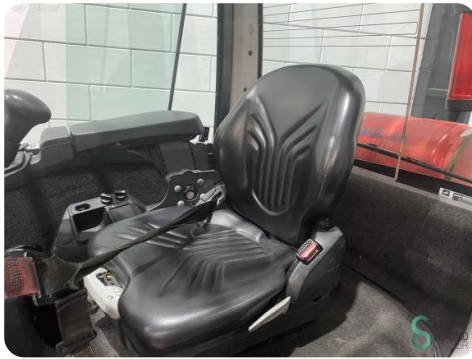


**STILL**  
 Type-Modell-Typ / Serial no.-No. de serie-Serien-Nr. / Year-année-Jahr  
**RX 70-20T/600 / 517306300014 / 2018**

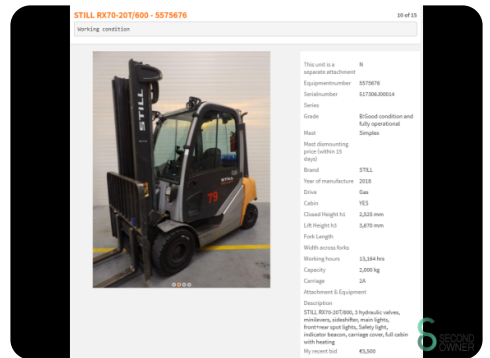
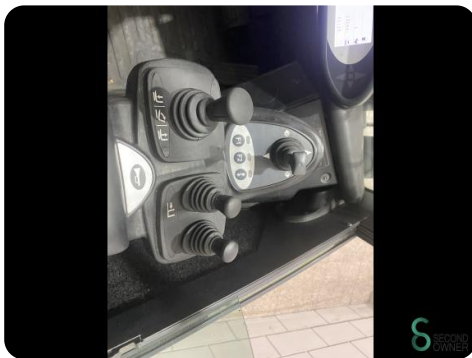
Rated capacity Capacité nominale Nenn-Tragfähigkeit	2000 kg	Unladen mass Masse à vide Leertgewicht	4029 kg
Battery voltage Tension batterie Batteriespannung	V	max. kg	kg
Rated drive power Puissance motrice Nenn-Antriebsleistung	36 kW	min. kg	kg

Use operating instructions  
voir Mode d'emploi  
siehe Betriebsanleitung

CE



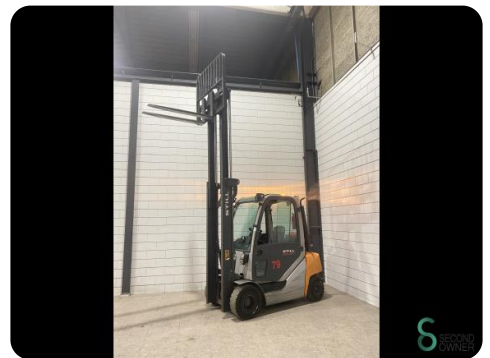
URZAD DOZORU  
 TECHNICZNEGO  
 www.udt.gov.pl  
 PERMIA NASTĘPNIEGO BRANINIE  
 2025



STILL RX70-20T/600 - 5575676

working condition

This unit is a	W
separate attachment	
Equipment number	937876
Serial number	517306300014
Series	
State	85good condition and fully operational
Year	2018
Year dismantling	2018
Year of manufacture	2018
Drive	Gas
Cabin	YES
Class height (h)	2,225 mm
Lift height (h)	3,875 mm
Fork length	
Width across forks	53,54 mm
Capacity	2,000 kg
Control	SA
Attachment & Equipment	
Description	STILL RX70-20T/600, 2 hydraulic valves, 2 hydraulic cylinders, mast lights, indicator (on right), safety light, indicator beacons, carriage frame, full cabin with heating
My recent bid	€1,500





Havenweg 6  
6603AS Wijchen

**T:** +31 6 11462913  
**E:** [Koen@secondowner.com](mailto:Koen@secondowner.com)  
**W:** <https://secondowner.com>

