

Forklift - Still RX20-14



Forklift - Still RX20-14

WKH.4232



Elektric



4400mm



1400kg



3993



2017

Brand Still

Model RX20-14

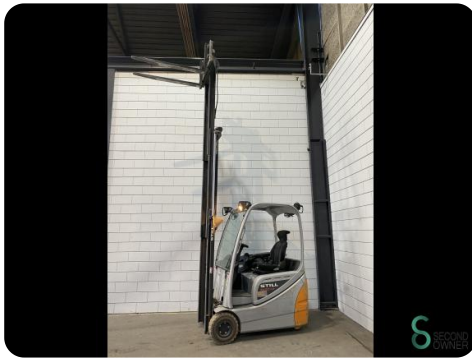
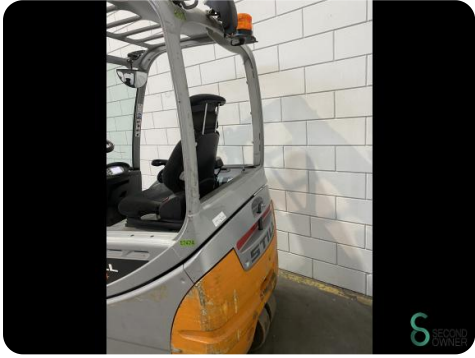
Year 2017

Specifications

Drive	Elektric
Capacity	625Ah
Brand/Type	GNB 05 EOZS 0625 SLC
Battery voltage	48V
Free lift	1500mm
Overhead clearance	2100mm

Dimensions

Length	2000
Width	1150
Height	2100
Weight	2736



Havenweg 6
6603AS Wijchen

T: +31 6 11462913
E: Koen@secondowner.com
W: <https://secondowner.com>

