

Forklift - Still RX20-14C



Forklift - Still RX20-14C

WKH.4765



Elektric



5700mm



1400kg



11690



2019

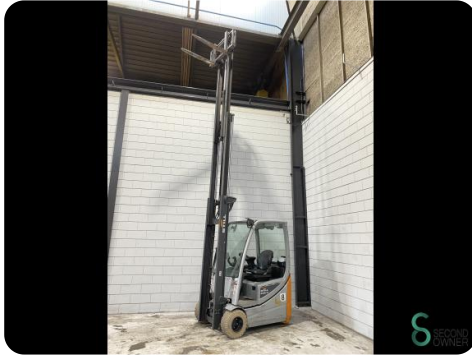
Brand	Still
Model	RX20-14C
Year	2019

Specifications

Drive	Elektric
Capacity	625Ah
Battery voltage	48V
Battery year of construction	2019
Options	Non-marking tires, Joystick
Free lift	2050mm

Dimensions

Length	2000
Width	1150
Height	2500
Weight	3076



Havenweg 6
6603AS Wijchen

T: +31 6 11462913
E: Koen@secondowner.com
W: <https://secondowner.com>

