

## Forklift - Still RX20-14C



## Forklift - Still RX20-14C

WKH.4142



Elektric



3160mm



1400kg



16270



2019

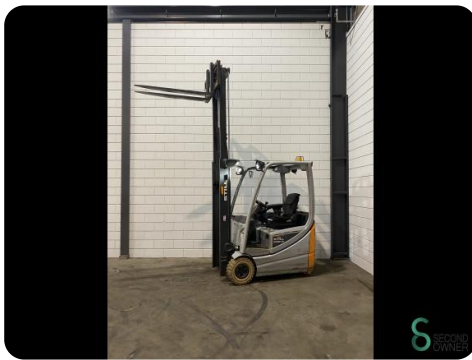
<b>Brand</b>	Still
<b>Model</b>	RX20-14C
<b>Year</b>	2019

### Specifications

<b>Drive</b>	Elektric
<b>Capacity</b>	610Ah
<b>Brand/Type</b>	GNB 05 TCSV 0610 SC
<b>Battery voltage</b>	48V
<b>Battery year of construction</b>	2019
<b>Free lift</b>	1550mm

### Dimensions

<b>Length</b>	2000
<b>Width</b>	1150
<b>Height</b>	2080
<b>Weight</b>	2940



Havenweg 6  
6603AS Wijchen

T: +31 6 11462913  
E: [Koen@secondowner.com](mailto:Koen@secondowner.com)  
W: <https://secondowner.com>

