

Forklift - Still RX20-14C



Forklift - Still RX20-14C

WKH.4219



Elektric



5270mm



1400kg



16900



2014

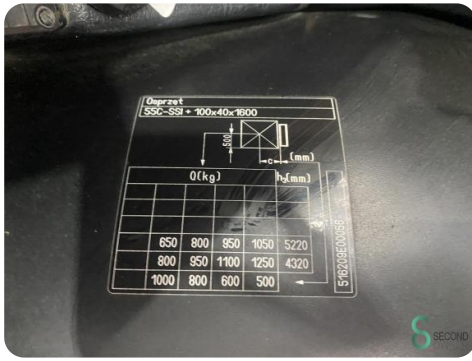
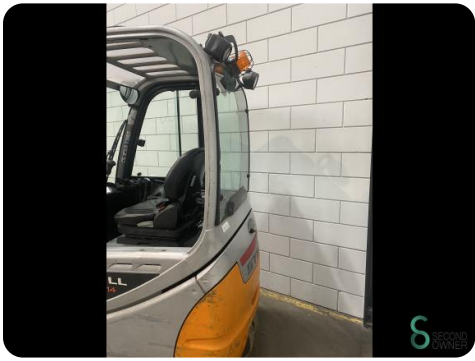
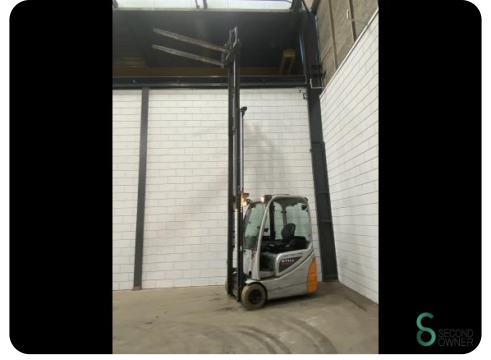
Brand	Still
Model	RX20-14C
Year	2014

Specifications

Drive	Elektric
Capacity	625Ah
Battery voltage	48V
Battery year of construction	2020
Free lift	1550mm
Overhead clearance	2250mm

Dimensions

Length	2000
Width	1150
Height	2250
Weight	3206



Havenweg 6
6603AS Wijchen

T: +31 6 11462913
E: Koen@secondowner.com
W: <https://secondowner.com>

