

## Forklift - Still RX20-15



## Forklift - Still RX20-15

WKH.4539



Elektric



5300mm



1500kg



6331



2017

**Brand** Still

**Model** RX20-15

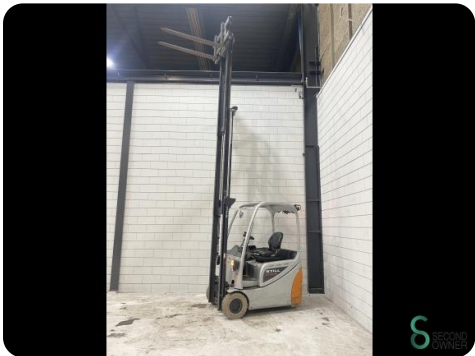
**Year** 2017

### Specifications

<b>Drive</b>	Elektric
<b>Capacity</b>	625Ah
<b>Brand/Type</b>	Hawker 48v 5 PZS 625
<b>Battery voltage</b>	48V
<b>Battery year of construction</b>	2017
<b>Free lift</b>	1770mm

### Dimensions

<b>Length</b>	2000
<b>Width</b>	1150
<b>Height</b>	2260
<b>Weight</b>	3094



Havenweg 6  
6603AS Wijchen

T: +31 6 11462913  
E: [Koen@secondowner.com](mailto:Koen@secondowner.com)  
W: <https://secondowner.com>

