

Forklift - Still RX20-15



Forklift - Still RX20-15

WKH5.627



Elektric



4650mm



1500kg



9803



2015

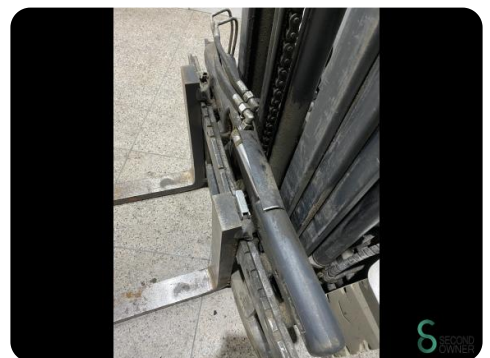
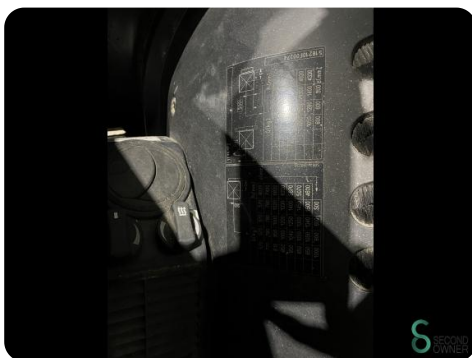
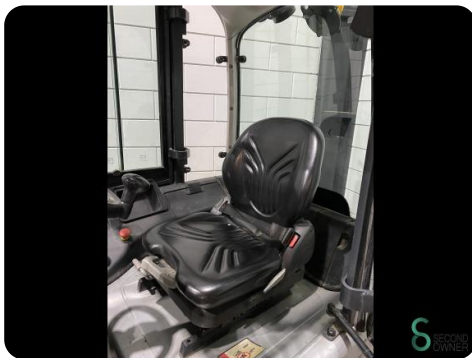
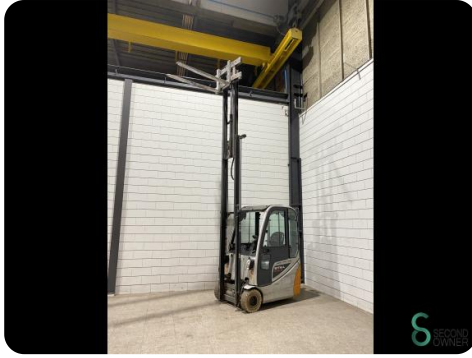
Brand	Still
Model	RX20-15
Year	2015

Specifications

Drive	Elektric
Capacity	625Ah
Brand/Type	Still
Battery voltage	48V
Battery year of construction	2018
Inspection valid until	06.2025

Dimensions

Length	2000
Width	1150
Height	2070
Weight	3061





Havenweg 6
6603AS Wijchen

T: +31 6 11462913
E: Koen@secondowner.com
W: <https://secondowner.com>

