

Forklift - Still RX20-15



Forklift - Still RX20-15

WKH.3663



Elektric



6400mm



1500kg



9823



2012

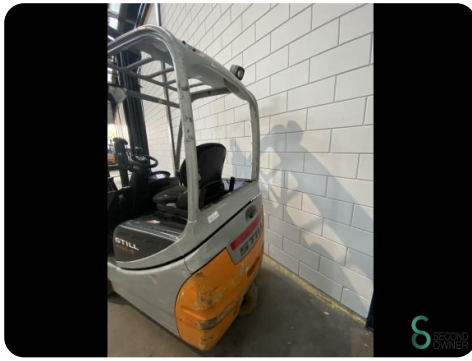
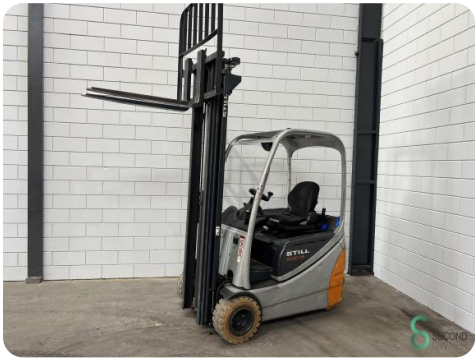
Brand	Still
Model	RX20-15
Year	2012

Specifications

Drive	Elektric
Capacity	625Ah
Brand/Type	5 PZS 625
Battery voltage	48V
Battery year of construction	2012
Options	Non-marking tires

Dimensions

Length	1900
Width	1200
Height	2730
Weight	2763



Havenweg 6
6603AS Wijchen

T: +31 6 11462913
E: Koen@secondowner.com
W: <https://secondowner.com>

