

Forklift - Still RX20-15



Forklift - Still RX20-15

WKH.4540



Elektric



800mm



1500kg



5352



2018

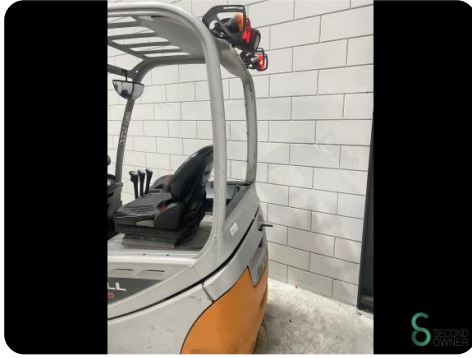
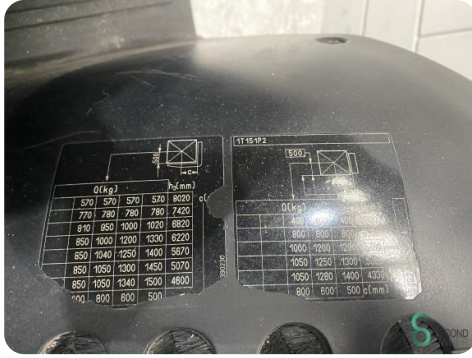
Brand	Still
Model	RX20-15
Year	2018

Specifications

Drive	Elektric
Capacity	625Ah
Brand/Type	GNB 5 PZS 625
Battery voltage	48V
Battery year of construction	2018
Free lift	2450mm

Dimensions

Length	2000
Width	1150
Height	2900
Weight	3207



Havenweg 6
6603AS Wijchen

T: +31 6 11462913
E: Koen@secondowner.com
W: <https://secondowner.com>

