

## Forklift - Still RX20-15



## Forklift - Still RX20-15

WKH.4678



Elektric



5220mm



1500kg



15652



2018

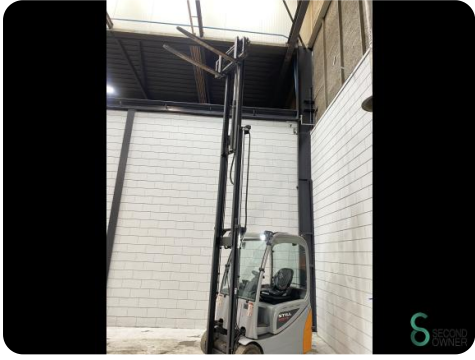
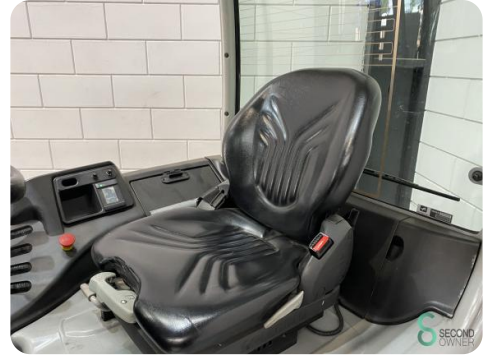
<b>Brand</b>	Still
<b>Model</b>	RX20-15
<b>Year</b>	2018

### Specifications

<b>Drive</b>	Elektric
<b>Capacity</b>	625Ah
<b>Brand/Type</b>	5 PZS 625
<b>Battery voltage</b>	48V
<b>Battery year of construction</b>	2018
<b>Inspection valid until</b>	1-2025

### Dimensions

<b>Length</b>	1950
<b>Width</b>	1150
<b>Height</b>	2250
<b>Weight</b>	3241



Havenweg 6  
6603AS Wijchen

T: +31 6 11462913  
E: Koen@secondowner.com  
W: <https://secondowner.com>

