

Forklift - Still RX20-16



Forklift - Still RX20-16

WKH6.658



1600kg



4920mm



2018



11124



Elektric

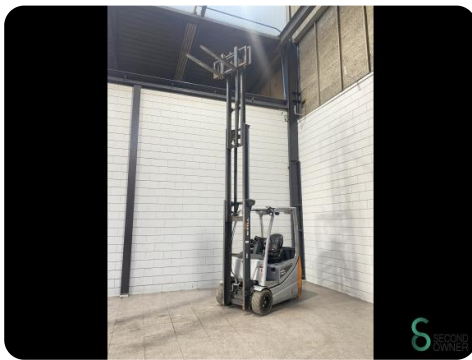
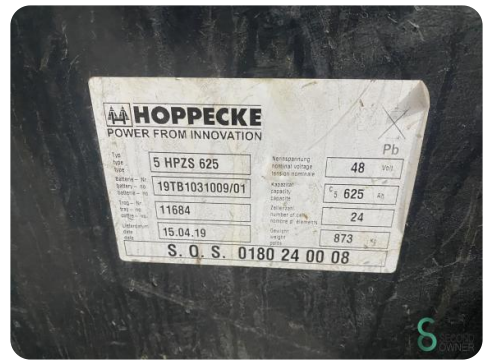
Brand	Still
Model	RX20-16
Year	2018

Specifications

Drive	Elektric
Capacity	625Ah
Brand/Type	Hoppecke
Battery voltage	48V
Battery year of construction	2019
Options	Work lights, Joystick, Non-marking tires, Free-lift

Dimensions

Length	2000
Width	1150
Height	2160
Weight	3218





Havenweg 6
6603AS Wijchen

T: +31 6 11462913
E: Koen@secondowner.com
W: <https://secondowner.com>

