

Forklift - Still RX20-16



Forklift - Still RX20-16

WKH.4882



1600kg



3450mm



2008



10308



Elektric

Brand Still

Model RX20-16

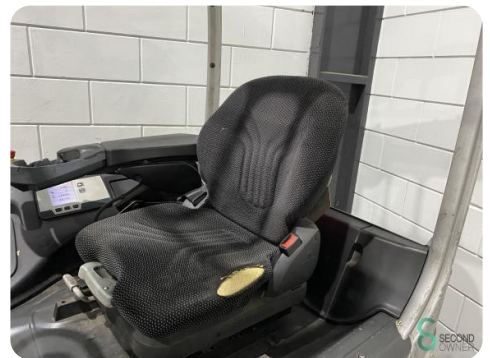
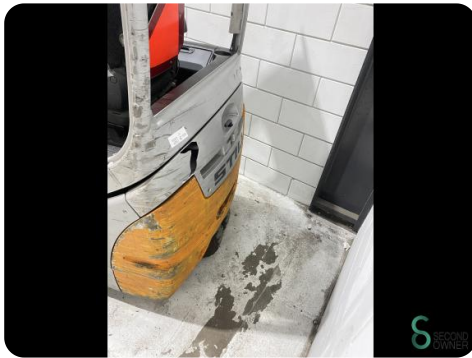
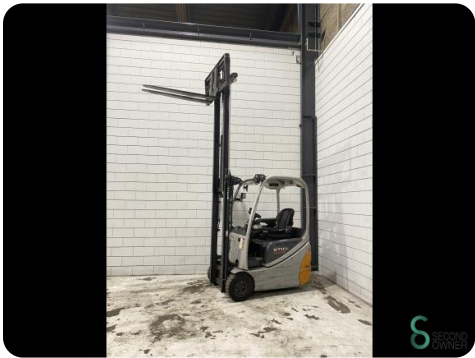
Year 2008

Specifications

Drive	Elektric
Capacity	625Ah
Brand/Type	Marathon
Battery voltage	48V
Battery year of construction	2018
Options	Free-lift, Work lights

Dimensions

Length	2000
Width	1150
Height	2170
Weight	3000



STILL

Type-Modèle-Typ / Serial no.-No. de série-Serien-Nr. / year-année-Baujahr

RX 20-16 / 516211022440 / 2008

Rated capacity
Capacité nominale
Nenn-Tragfähigkeit

1600 kg

Unladen mass
Masse à vide
Laergewicht

2071 kg

Battery voltage
Tension batterie
Batteriespannung

48 V

Battery mass max.
Masse batterie *
Batteriegew. min.

929 kg

813 kg

Rated drive power
Puissance motr.nom.
Nenn-Antriebsleist.

9.0 kW

Ballast weight *
Poids additionnel
Zusatzgewicht

kg

CE

* see Operating Instructions
voir Mode d'emploi
siehe Betriebsanleitung

D-22113 Hamburg
Berzeliusstr. 10

 SECOND
OWNER

Havenweg 6
6603AS Wijchen

T: +31 6 44300552
E: Tess@secondowner.com
W: <https://secondowner.com>

 SECOND
OWNER