

## Forklift - Still RX20-16



## Forklift - Still RX20-16

WKH.4681



Elektric



3480mm



1600kg



8662



2019

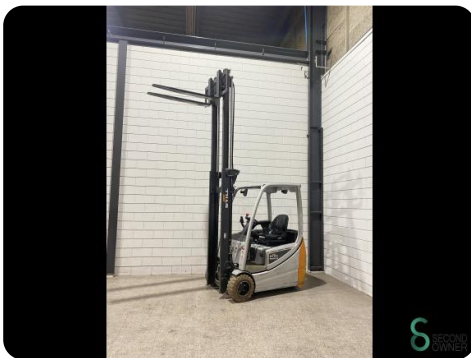
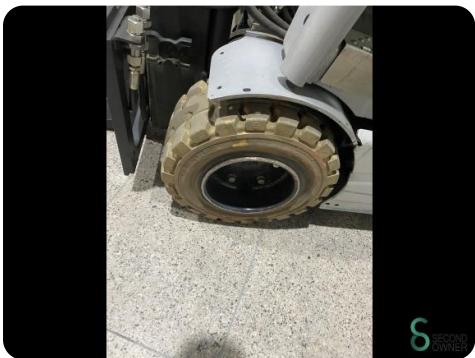
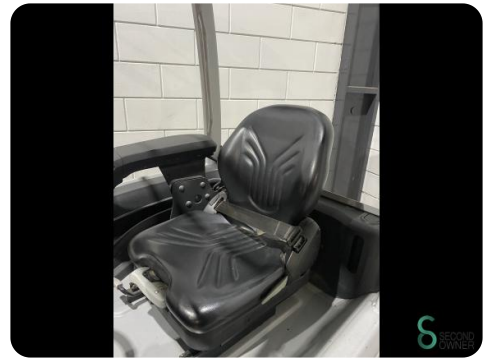
<b>Brand</b>	Still
<b>Model</b>	RX20-16
<b>Year</b>	2019

### Specifications

<b>Drive</b>	Elektric
<b>Capacity</b>	575Ah
<b>Brand/Type</b>	Smart
<b>Battery voltage</b>	48V
<b>Battery year of construction</b>	2019
<b>Options</b>	Work lights, Joystick, Non-marking tires

### Dimensions

<b>Length</b>	2000
<b>Width</b>	1150
<b>Height</b>	2280
<b>Weight</b>	3043





**S** SECOND  
OWNER

Havenweg 6  
6603AS Wijchen

**T:** +31 6 11462913  
**E:** [Koen@secondowner.com](mailto:Koen@secondowner.com)  
**W:** <https://secondowner.com>

**S** SECOND  
OWNER