

Forklift - Still RX20-16



Forklift - Still RX20-16

WKH5.811



Elektric



4620mm



1600kg



9384



2018

Brand Still

Model RX20-16

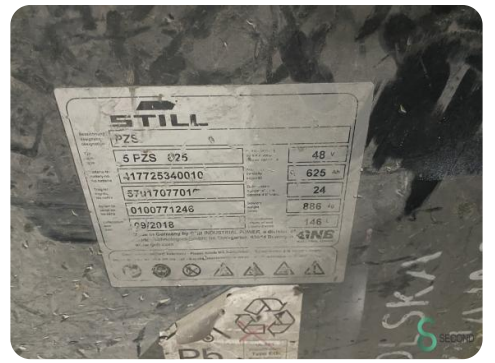
Year 2018

Specifications

Drive	Elektric
Capacity	625Ah
Brand/Type	Still
Battery voltage	48V
Battery year of construction	2018
Inspection valid until	10.2025

Dimensions

Length	2050
Width	1150
Height	2050
Weight	3170



STILL
 Type-Modell Typ / Serial no. / No. de série / Serie-Nr. / year/model / year-modèle
 RX20-16 516221100795 2016

Load capacity / Capacité nominale / Nominaltragfähigkeit	1600 kg	Max. lift height / Hauteur max. / Max. Hubhöhe	2272 mm
Battery voltage / Tension batterie / Batteriespannung	48 V	Max. speed / Vitesse max. / Max. Fahrgeschwindigkeit	890 km/h
Rated drive power / Puissance nominale	13 kW		812 km/h

STILL GmbH
 Berzeliusstr. 10
 D-22113 Hamburg

ST18B12

Speed (km/h)	1000	1300	1600	1900	2200
Power (kW)	10.0	13.0	16.0	19.0	22.0



Havenweg 6
6603AS Wijchen

T: +31 6 11462913
E: Koen@secondowner.com
W: <https://secondowner.com>

