

Forklift - Still RX20-16



Forklift - Still RX20-16

WKH.4075



Elektric



5220mm



1600kg



12301



2019

Brand Still

Model RX20-16

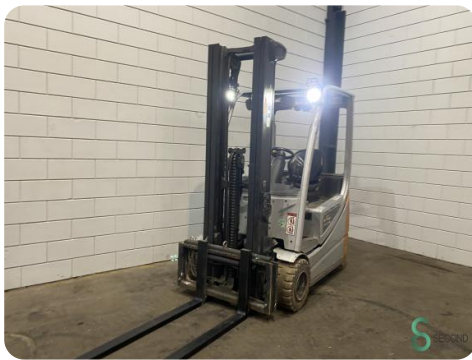
Year 2019

Specifications

Drive	Elektric
Capacity	625Ah
Brand/Type	GNB 5 PZS 625
Battery voltage	48V
Battery year of construction	2019
Free lift	1500mm

Dimensions

Length	2000
Width	1150
Height	2250
Weight	3215



Havenweg 6
6603AS Wijchen

T: +31 6 11462913
E: Koen@secondowner.com
W: <https://secondowner.com>

