

Forklift - Still RX20-16



Forklift - Still RX20-16

WKH.3961



Elektric



5250mm



1600kg



11878



2019

Brand	Still
Model	RX20-16
Year	2019

Specifications

Drive	Elektric
Capacity	625Ah
Brand/Type	Hoppecke 48 v 5 HPZS 625
Battery voltage	48V
Battery year of construction	2018

Options

Full
cabin,
Work
lights,
Non-
marking
tires,
Free-lift

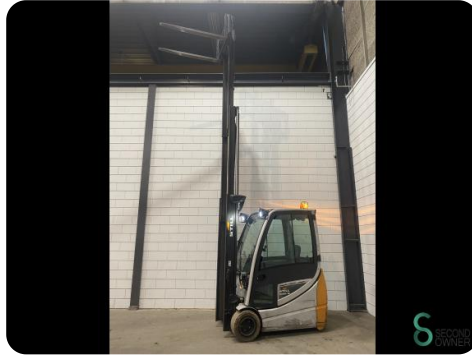
Dimensions

Length	2000
---------------	------

Width	1150
--------------	------

Height	2250
---------------	------

Weight	3248
---------------	------



Havenweg 6
6603AS Wijchen

T: +31 6 11462913
E: Koen@secondowner.com
W: <https://secondowner.com>

