

## Forklift - Still RX20-16



## Forklift - Still RX20-16

WKH.4183



Elektric



3200mm



1600kg



12998



2018

**Brand** Still

**Model** RX20-16

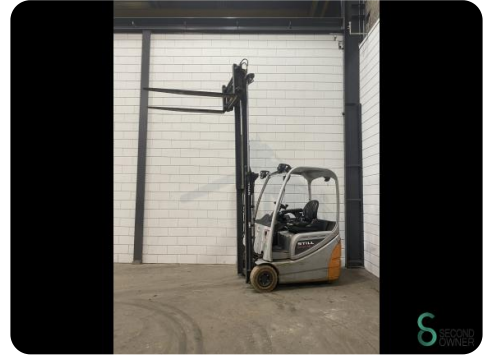
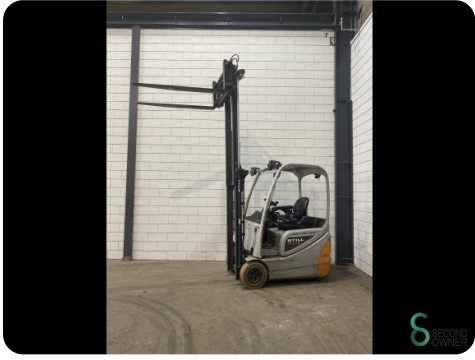
**Year** 2018

### Specifications

<b>Drive</b>	Elektric
<b>Capacity</b>	625Ah
<b>Brand/Type</b>	GNB 5 PZS 625
<b>Battery voltage</b>	48V
<b>Battery year of construction</b>	2018
<b>Free lift</b>	1450mm

### Dimensions

<b>Length</b>	2000
<b>Width</b>	1150
<b>Height</b>	2050
<b>Weight</b>	3200



Havenweg 6  
6603AS Wijchen

T: +31 6 11462913  
E: Koen@secondowner.com  
W: <https://secondowner.com>

