

## Forklift - Still RX20-16



## Forklift - Still RX20-16

WKH.4377



Elektric



5250mm



1600kg



8373



2019

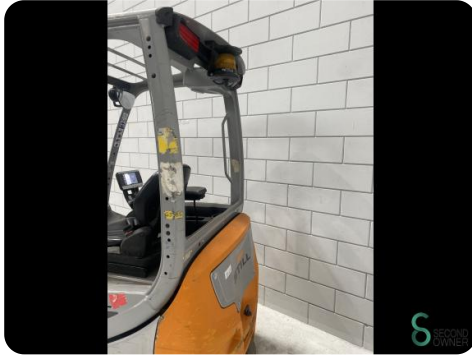
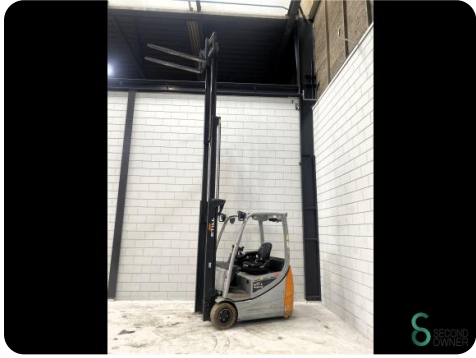
<b>Brand</b>	Still
<b>Model</b>	RX20-16
<b>Year</b>	2019

### Specifications

<b>Drive</b>	Elektric
<b>Capacity</b>	625Ah
<b>Brand/Type</b>	GNB 5 PZS C25
<b>Battery voltage</b>	48V
<b>Battery year of construction</b>	2019
<b>Free lift</b>	1800mm

### Dimensions

<b>Length</b>	2100
<b>Width</b>	1150
<b>Height</b>	2250
<b>Weight</b>	3246



Havenweg 6  
6603AS Wijchen

T: +31 6 11462913  
E: Koen@secondowner.com  
W: <https://secondowner.com>

