

Forklift - Still RX20-16



Forklift - Still RX20-16

WKH.4186



Elektric



5250mm



1600kg



9383



2018

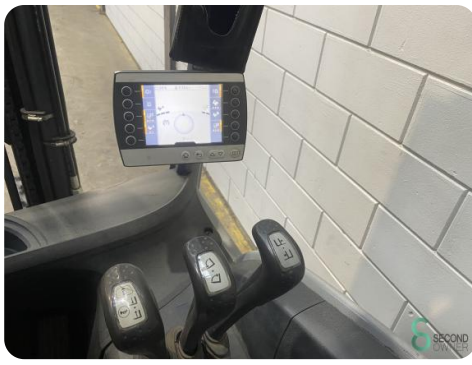
Brand	Still
Model	RX20-16
Year	2018

Specifications

Drive	Elektric
Battery voltage	24V
Free lift	1700mm
Overhead clearance	2250mm
Fork length	1200mm
Lifting capacity	1600kg

Dimensions

Length	2000
Width	1150
Height	2250
Weight	3200



STILL		STILL GmbH Berzeliusstr.10 D-22113 Hamburg	
Type-Modèle-Typ / Serial no.-No. de série-Serien-Nr. / year-année-Baujahr	RX20-16 / 51622100342		2018
Rated capacity Capacité nominale Nenn-Tragfähigkeit	1600 kg	Unladen mass Masse à vide Leertgewicht	2302 Kg
Battery voltage Tension batterie Batteriespannung	48 V	max. min.	898 Kg 812 Kg
Rated drive power Puissance moteur Nenn-Antriebsleistung	13 kW		



Havenweg 6
6603AS Wijchen

T: +31 6 11462913
E: Koen@secondowner.com
W: <https://secondowner.com>

