

Forklift - Still RX20-16



Forklift - Still RX20-16

WKH.4254



Elektric



4650mm



1600kg



15328



2018

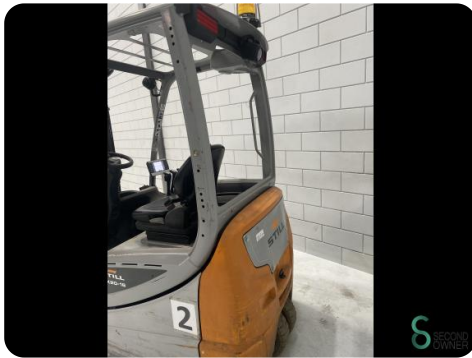
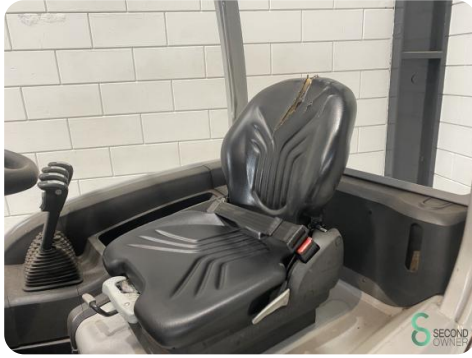
Brand	Still
Model	RX20-16
Year	2018

Specifications

Drive	Elektric
Capacity	625Ah
Brand/Type	GNB 5PZS 625
Battery voltage	48V
Free lift	1550mm
Overhead clearance	2200mm

Dimensions

Length	2000
Width	1100
Height	2200
Weight	3106



Havenweg 6
6603AS Wijchen

T: +31 6 11462913
E: Koen@secondowner.com
W: <https://secondowner.com>



STILL		STILL GmbH Berzeliusstr. 10 D-22113 Hamburg	
Type-Modell-Typ / Serial no./No. de série-Serien-Nr. / year-année-Jahr	51622101319	2018	
Rated capacity Capacité nominale Nenn-Tragfähigkeit	1600 Kg	Unladen mass Masse à vide Leertgewicht	12267 kg
Battery voltage Tension batterie Stromspannung	48 v	max. min.	395 317
Rated drive power Puissance motric nom. Nenn-Antriebsleistung	13 kw		
* see Operating instructions voir Mode d'emploi siehe Betriebsanleitung			