

## Forklifts - Still RX20-16



## Forklifts - Still RX20-16

WKH5.671



1600kg



4960mm



Electric



2006



6836

**Brand** Still

**Model** RX20-16

**Year** 2006

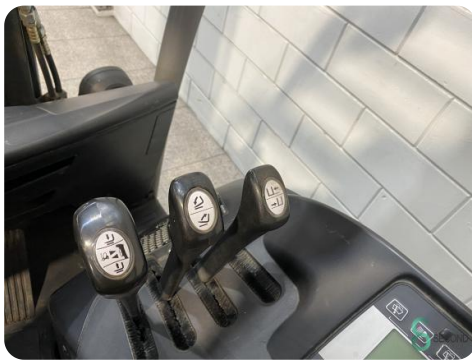
### Specifications

<b>Drive</b>	Elektric
<b>Capacity</b>	625Ah
<b>Brand/Type</b>	Still
<b>Battery voltage</b>	48V
<b>Battery year of construction</b>	2019
<b>Inspection valid until</b>	10.2025

[For all product specifications click here](#)

### Dimensions

<b>Length</b>	200 mm
<b>Width</b>	1150 mm
<b>Height</b>	2150 mm
<b>Weight</b>	3184 kg



STILL			
type-Modelle-Typ / Serial no.-No. de série-Serien-Nr. / year-année-Jahr			
RX 20-16		516211004338 / 2006	
Rated capacity Capacité nominale Nenn-Tragfähigkeit	1600 kg Leergewicht	Division mass Masse à vide	2234 kg
Battery voltage Tension batterie Batteriespannung	48 V	Battery mass max. Masse Batterie Batteriegew. max.	950 kg 860 kg
Rated drive power Puissance moteur Nenn-Antriebsleistung	9.0 kW	Balast weight Poids additionnel Lastgewicht	kg
* see Operating instructions voir Mode d'emploi siehe Betriebsanleitung			
CE		B-2213 Hamburg Beratshaus 13	

STILL			
Perfect Plus			
TYPE	5 PZS 625	NOMINAL VOLTAGE TENSION NOMINALE	48 Volt
SERIAL NUMBER NO. DE SÉRIE SERIENNUMMER	5121228001	CAPACITY CAPACITÉ NENNTRAGF.	CS 625 A10
MODEL NO. NO. DE MODÈLE MODELL-NR.	0035.02427	NUMBER OF FORKS NO. DE FOURCHES GABELN	24
CUSTOMER REF. REF. DE CLIENT KUNDEN-NR.	PIRA022525, Pos. 0	MAX. WEIGHT POIDS MAX. NENNTRAGF.	864 kg
DATE OF MANUFACTURE DATE DE FABRICATION	30.03.2006	powered by HAWKER	



Havenweg 6  
6603AS Wijchen

T: +31 611462913  
E: [koen@secondowner.com](mailto:koen@secondowner.com)  
W: <https://secondowner.com>

