

Forklift - Still RX20-16P



Forklift - Still RX20-16P

WKH6.369



1600kg



5220mm



2019



11907



Elektric

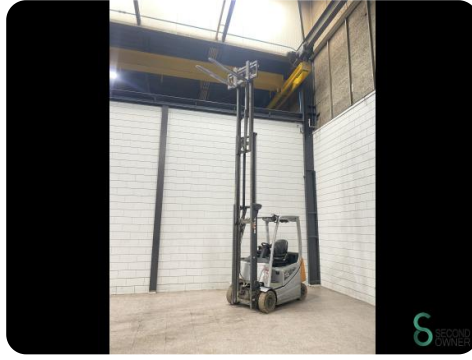
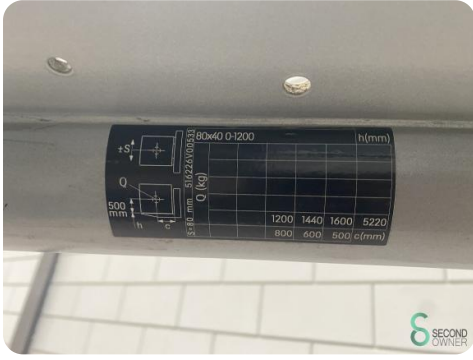
Brand	Still
Model	RX20-16P
Year	2019

Specifications

Drive	Elektric
Capacity	625Ah
Brand/Type	Still
Battery voltage	48V
Battery year of construction	2019
Options	Non-marking tires, Free-lift, Joystick, Work lights

Dimensions

Length	2000
Width	1150
Height	2250
Weight	3018



Havenweg 6
6603AS Wijchen

T: +31 6 11462913
E: Koen@secondowner.com
W: <https://secondowner.com>

