

## Forklift - Still RX20-16P



## Forklift - Still RX20-16P

WKH6.813



1600kg



4573mm



2015



4464



Elektric

**Brand** Still

**Model** RX20-16P

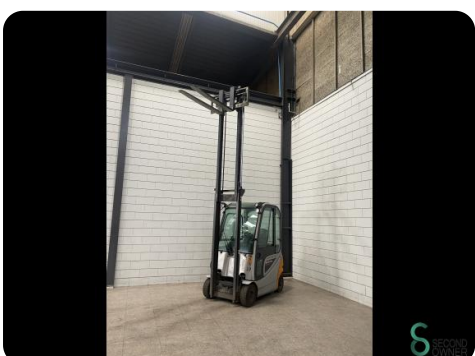
**Year** 2015

### Specifications

<b>Drive</b>	Elektric
<b>Capacity</b>	625Ah
<b>Brand/Type</b>	Still
<b>Battery voltage</b>	48V
<b>Options</b>	Work lights, Full cabin
<b>Maximum fork width</b>	800mm

### Dimensions

<b>Length</b>	2150
<b>Width</b>	1150
<b>Height</b>	2450
<b>Weight</b>	3018





Havenweg 6  
6603AS Wijchen

**T:** +31 6 11462913  
**E:** [Koen@secondowner.com](mailto:Koen@secondowner.com)  
**W:** <https://secondowner.com>