

Forklift - Still RX20-16P



Forklift - Still RX20-16P

WKH5.780



1600kg



5680mm



2019



11793



Elektric

Brand Still

Model RX20-16P

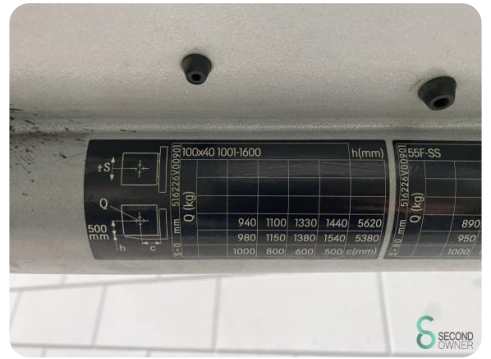
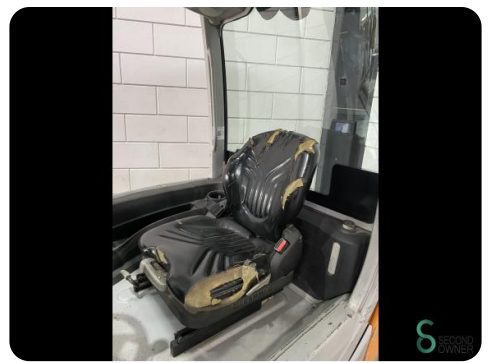
Year 2019

Specifications

Drive	Elektric
Capacity	625Ah
Brand/Type	Still
Battery voltage	48V
Battery year of construction	2019
Options	Half cabin, Non-marking tires, Free-lift, Work lights

Dimensions

Length	2150
Width	1200
Height	2470
Weight	3018



Havenweg 6
6603AS Wijchen

T: +31 6 11462913
E: Koen@secondowner.com
W: <https://secondowner.com>

