

Forklift - Still RX20-16P



Forklift - Still RX20-16P

WKH5.411



1600kg



5650mm



2019



13478



Elektric

Brand Still

Model RX20-16P

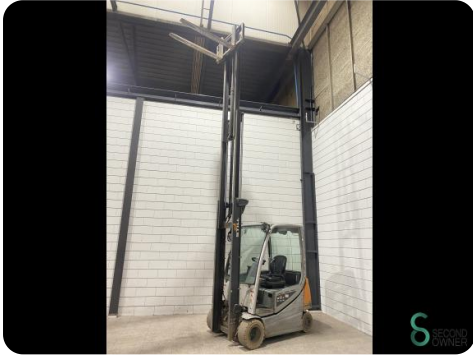
Year 2019

Specifications

Drive	Elektric
Capacity	750Ah
Brand/Type	Still
Battery year of construction	2019
Inspection valid until	06.2025
Options	Non-marking tires, Work lights, Half cabin

Dimensions

Length	2100
Width	1150
Height	2460
Weight	3283





Havenweg 6
6603AS Wijchen

T: +31 6 11462913
E: Koen@secondowner.com
W: <https://secondowner.com>