

Forklift - Still RX20-18P



Forklift - Still RX20-18P

WKH5.413



Elektric



7720mm



1800kg



10521



2019

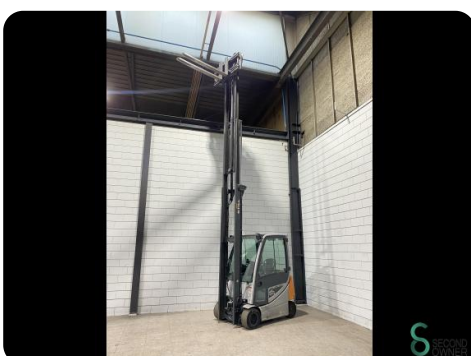
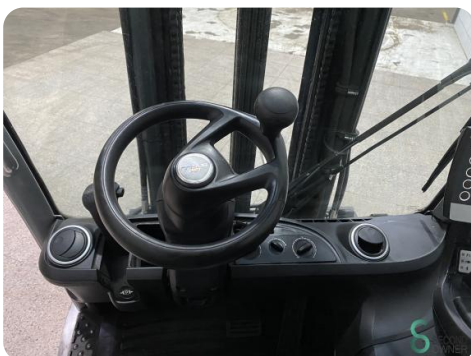
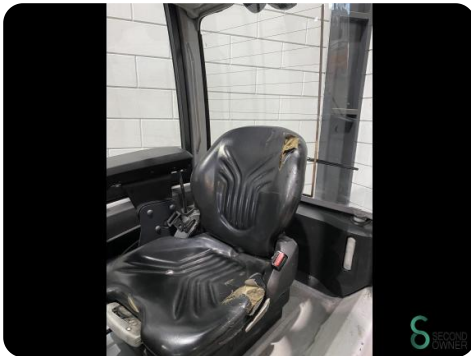
Brand	Still
Model	RX20-18P
Year	2019

Specifications

Drive	Elektric
Capacity	625Ah
Brand/Type	Still
Battery voltage	48V
Battery year of construction	2019
Options	Work lights, Verwarming, Full cabin, Free-lift

Dimensions

Length	2200
Width	1150
Height	3200
Weight	3625





Havenweg 6
6603AS Wijchen

T: +31 6 11462913
E: Koen@secondowner.com
W: <https://secondowner.com>

