

Forklift - Still RX20-20L



Forklift - Still RX20-20L

WKH.4708



Elektric



5100mm



2000kg



12915



2019

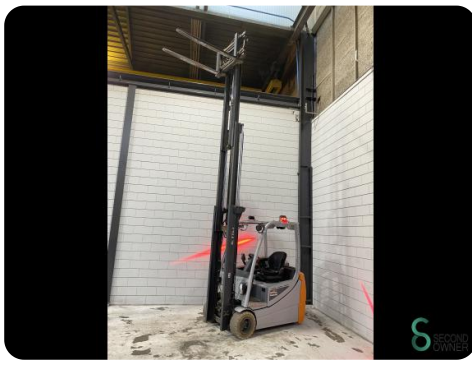
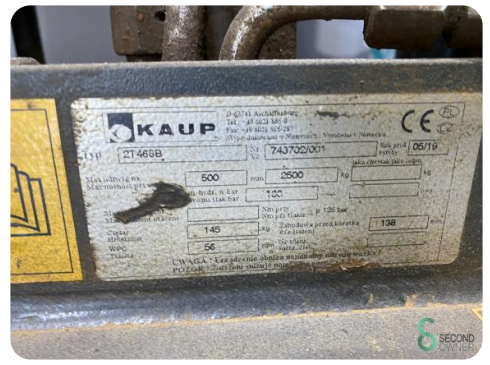
Brand	Still
Model	RX20-20L
Year	2019

Specifications

Drive	Elektric
Capacity	750Ah
Brand/Type	Still
Battery voltage	48V
Battery year of construction	2019
Options	Non-marking tires, Half cabin, Work lights

Dimensions

Length	2200
Width	1200
Height	2300
Weight	3719





Havenweg 6
6603AS Wijchen

T: +31 6 11462913
E: Koen@secondowner.com
W: <https://secondowner.com>

