

## Forklift - Still RX20-20P



## Forklift - Still RX20-20P

WKH5.622



Elektric



5080mm



2000kg



12553



2019

<b>Brand</b>	Still
<b>Model</b>	RX20-20P
<b>Year</b>	2019

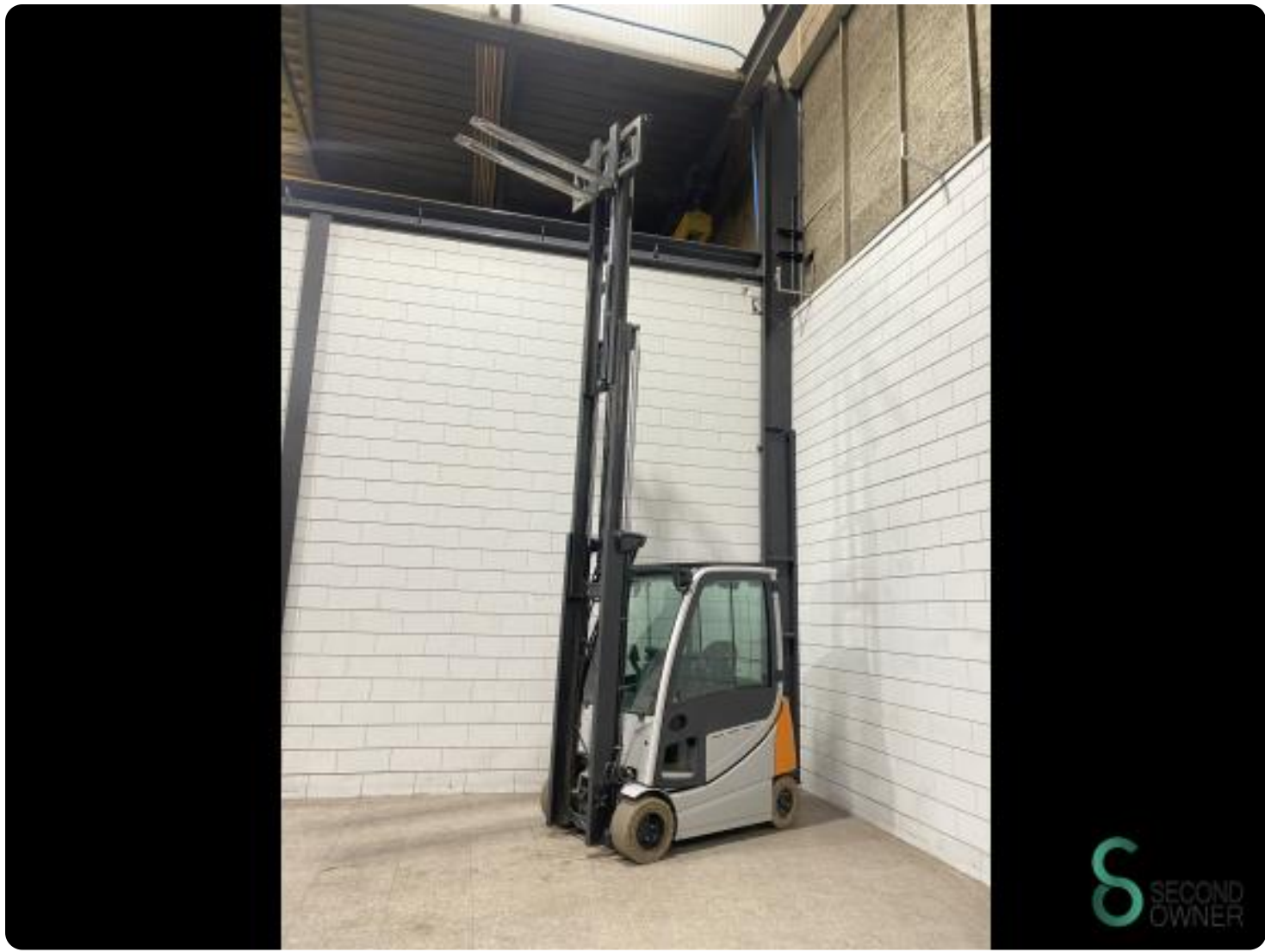
### Specifications

<b>Drive</b>	Elektric
<b>Capacity</b>	625Ah
<b>Brand/Type</b>	Still
<b>Battery voltage</b>	48V
<b>Battery year of construction</b>	2019
<b>Options</b>	Verwarming, Work lights, Free-lift, Joystick, Non-marking tires, Full cabin

### Dimensions

<b>Length</b>	2200
<b>Width</b>	1150
<b>Height</b>	2250
<b>Weight</b>	3777





Havenweg 6  
6603AS Wijchen

**T:** +31 6 11462913  
**E:** [Koen@secondowner.com](mailto:Koen@secondowner.com)  
**W:** <https://secondowner.com>

