

Forklift - Still RX20-20P



Forklift - Still RX20-20P

WKH.4714



Elektric



3300mm



2000kg



23524



2010

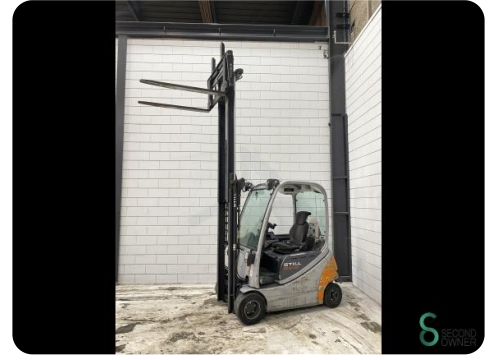
Brand	Still
Model	RX20-20P
Year	2010

Specifications

Drive	Elektric
Capacity	625Ah
Battery test result	2017%
Brand/Type	5 PZS 625
Battery voltage	48V
Options	Radio, Work lights, Free-lift

Dimensions

Length	2150
Width	1150
Height	2150
Weight	3225



Havenweg 6
6603AS Wijchen

T: +31 6 11462913
E: Koen@secondowner.com
W: <https://secondowner.com>

