

## Forklifts - Still RX50-13



## Forklifts - Still RX50-13

WKH.4761



1250kg



3260mm



Elektric



2018



2271

**Brand** Still

**Model** RX50-13

**Year** 2018

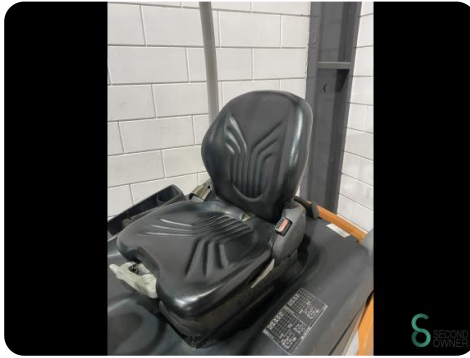
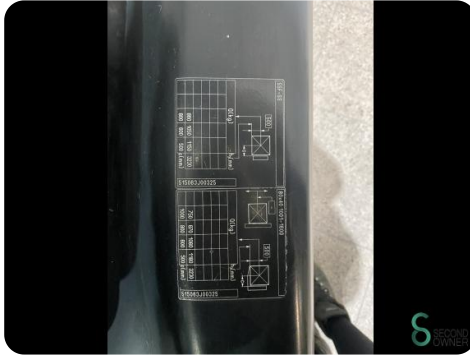
### Specifications

Drive	Elektric
Capacity	875Ah
Brand/Type	Still
Battery year of construction	2018
Maximum fork width	800mm
Overhead clearance	2120mm

[For all product specifications click here](#)

### Dimensions

Length	1900 mm
Width	1100 mm
Height	2120 mm
Weight	2699 kg





 SECOND  
OWNER

 SECOND  
OWNER

Havenweg 6  
6603AS Wijchen

T: +31 644300552  
E: [tess@secondowner.com](mailto:tess@secondowner.com)  
W: <https://secondowner.com>