

Forklift - Still RX50-13



Forklift - Still RX50-13

WKH6.003



Elektric



5300mm



1250kg



3851



2008

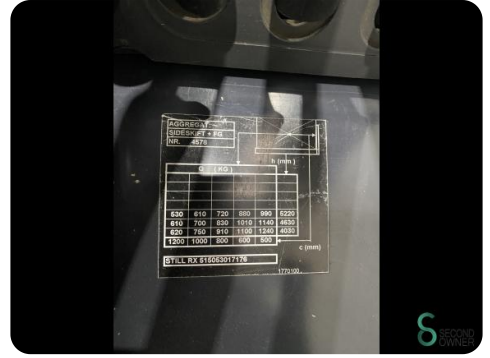
Brand	Still
Model	RX50-13
Year	2008

Specifications

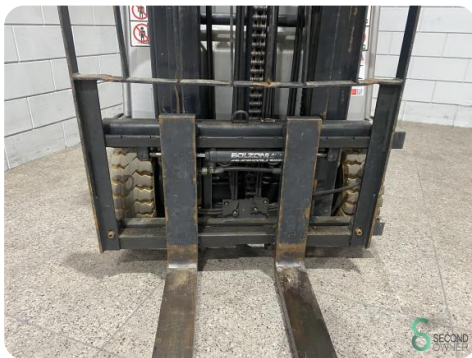
Drive	Elektric
Capacity	805Ah
Brand/Type	Marathon
Battery voltage	24V
Battery year of construction	2015
Inspection valid until	10.2025

Dimensions

Length	1950
Width	1050
Height	2250
Weight	2561



REGISTRATION					
DATE OF REGISTRATION					
No. 4874					
CLASS (L20)					
L (mm)					
630	610	720	820	900	1020
610	700	830	1010	1140	1450
630	740	810	1100	1140	1240
1200	1000	800	600	600	600
STILL RX 110201748					
177200					





Havenweg 6
6603AS Wijchen

T: +31 6 11462913
E: Koen@secondowner.com
W: <https://secondowner.com>

