

## Forklift - Still RX60-25



## Forklift - Still RX60-25

WKH.4858



Elektric



4450mm



2500kg



15615



2018

**Brand** Still

**Model** RX60-25

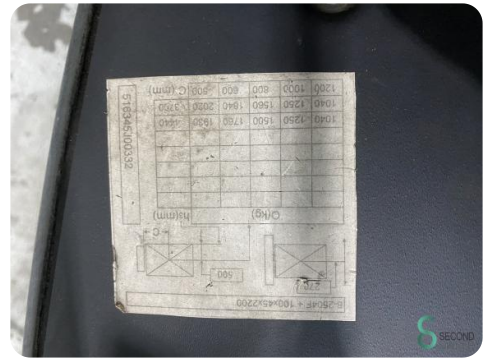
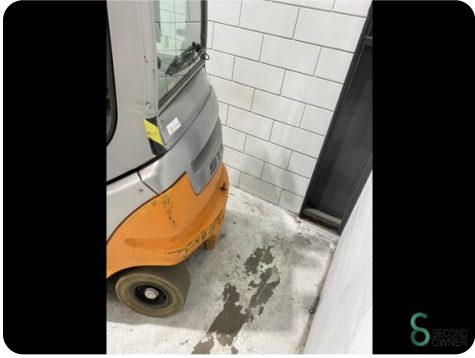
**Year** 2018

### Specifications

<b>Drive</b>	Elektric
<b>Capacity</b>	620Ah
<b>Brand/Type</b>	Still
<b>Battery year of construction</b>	2018
<b>Options</b>	Free-lift, Verwarming, Full cabin, Work lights, Non-marking tires
<b>Free lift</b>	1400mm

### Dimensions

<b>Length</b>	2300
<b>Width</b>	1200
<b>Height</b>	2100
<b>Weight</b>	5315



Havenweg 6  
6603AS Wijchen

T: +31 6 11462913  
E: Koen@secondowner.com  
W: <https://secondowner.com>

