

## Forklift - Still RX60-25



## Forklift - Still RX60-25

WKH5.425



Elektric



6040mm



2500kg



18419



2016

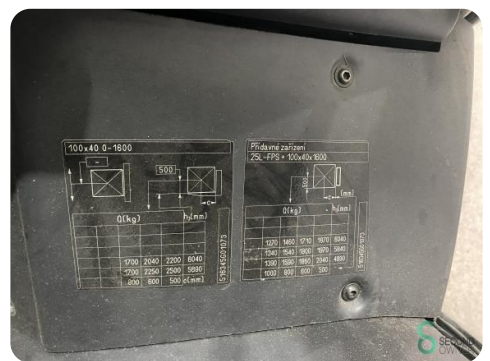
<b>Brand</b>	Still
<b>Model</b>	RX60-25
<b>Year</b>	2016

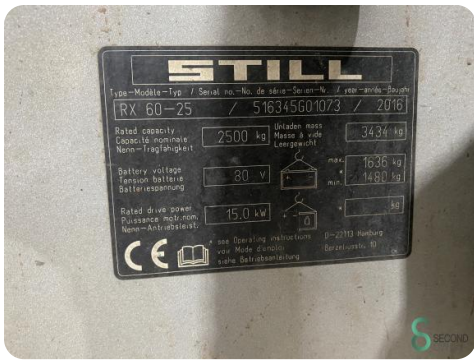
### Specifications

<b>Drive</b>	Elektric
<b>Capacity</b>	620Ah
<b>Brand/Type</b>	Smart
<b>Battery year of construction</b>	2016
<b>Options</b>	Non-marking tires, Full cabin, Verwarming, Free-lift, Work lights
<b>Free lift</b>	2050mm

### Dimensions

<b>Length</b>	2350
<b>Width</b>	1200
<b>Height</b>	2720
<b>Weight</b>	5070





Havenweg 6  
6603AS Wijchen

T: +31 6 11462913  
E: Koen@secondowner.com  
W: <https://secondowner.com>

