

## Forklift - Still RX60-25



## Forklift - Still RX60-25

WKH5.481



Elektric



4650mm



2500kg



12002



2019

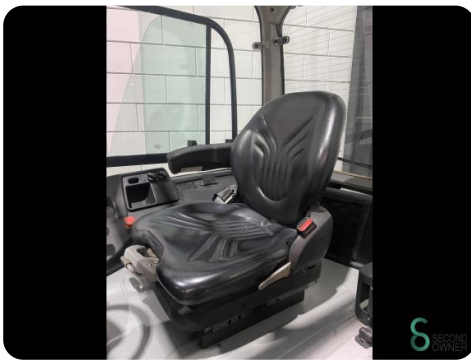
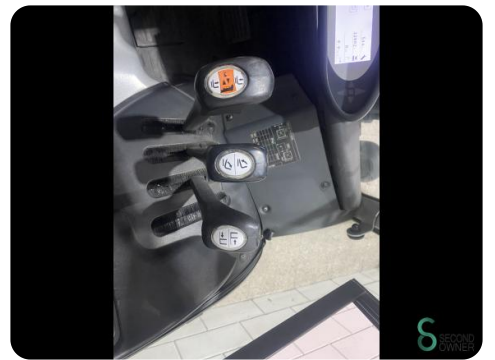
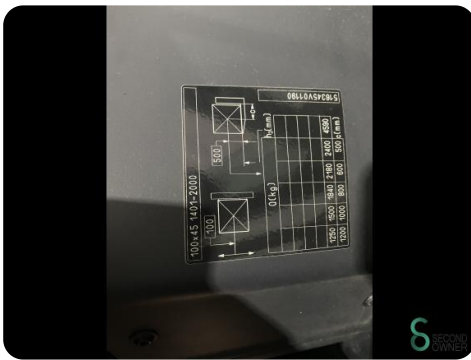
<b>Brand</b>	Still
<b>Model</b>	RX60-25
<b>Year</b>	2019

### Specifications

<b>Drive</b>	Elektric
<b>Capacity</b>	620Ah
<b>Brand/Type</b>	Still
<b>Battery voltage</b>	80V
<b>Battery year of construction</b>	2019
<b>Options</b>	Free-lift, Work lights, Non-marking tires, Verwarming, Full cabin

### Dimensions

<b>Length</b>	2400
<b>Width</b>	1200
<b>Height</b>	2220
<b>Weight</b>	5096





Havenweg 6  
6603AS Wijchen

**T:** +31 6 11462913  
**E:** [Koen@secondowner.com](mailto:Koen@secondowner.com)  
**W:** <https://secondowner.com>

