

## Forklift - Still RX60-25



## Forklift - Still RX60-25

WKH5.483



Elektric



4600mm



2500kg



14418



2019

**Brand** Still

**Model** RX60-25

**Year** 2019

### Specifications

**Drive** Elektric

**Capacity** 620Ah

**Brand/Type** Still

**Battery voltage** 80V

**Battery year of construction** 2019

**Inspection valid until** 09.2025

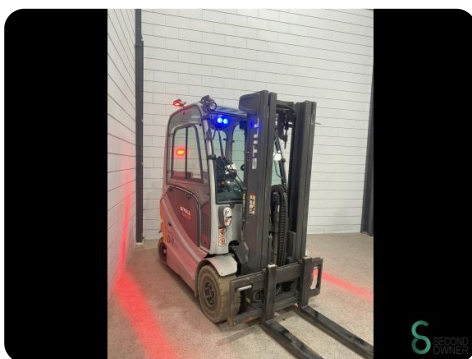
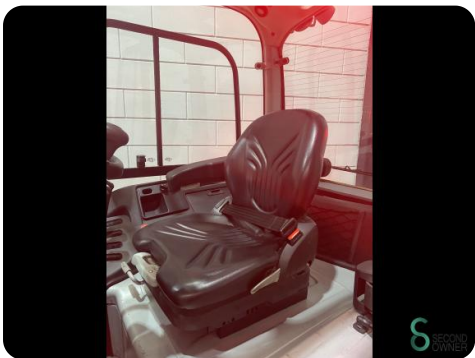
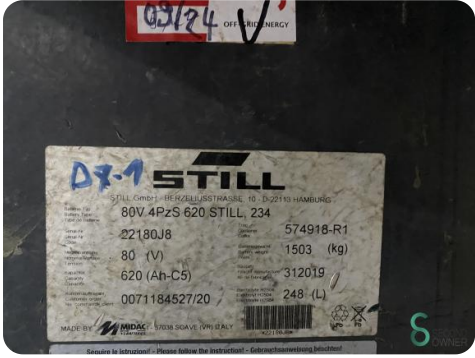
### Dimensions

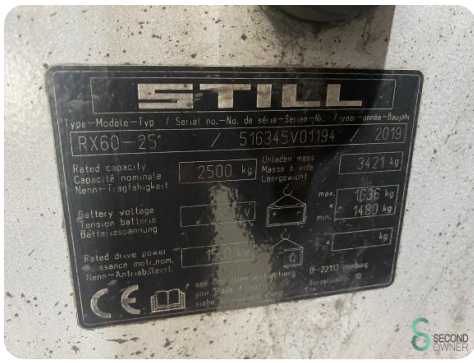
**Length** 2400

**Width** 1200

**Height** 2220

**Weight** 5057





Havenweg 6  
6603AS Wijchen

T: +31 6 11462913  
E: Koen@secondowner.com  
W: <https://secondowner.com>

