

## Forklift - Still RX60-25



## Forklift - Still RX60-25

WKH5.993



Elektric



5200mm



2500kg



15279

**Brand** Still

**Model** RX60-25

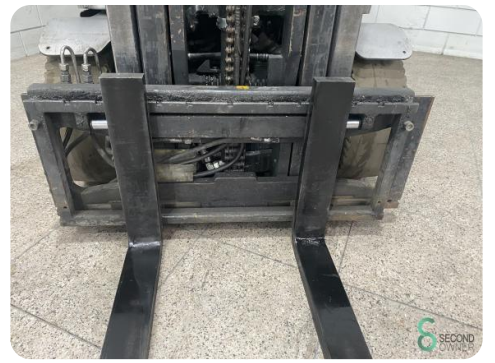
**Year**

### Specifications

<b>Drive</b>	Elektric
<b>Brand/Type</b>	GNB
<b>Battery voltage</b>	80V
<b>Battery year of construction</b>	2017
<b>Inspection valid until</b>	04.2025
<b>Options</b>	Work lights, Free-lift, Non-marking tires

### Dimensions

<b>Length</b>	2200
<b>Width</b>	1200
<b>Height</b>	2380
<b>Weight</b>	4651





Havenweg 6  
6603AS Wijchen

T: +31 6 44300552  
E: Tess@secondowner.com  
W: <https://secondowner.com>

