

## Forklifts - Still RX60-50



## Forklifts - Still RX60-50

WKH5.478



5000kg



3480mm



Elektric



2017



15647

**Brand** Still

**Model** RX60-50

**Year** 2017

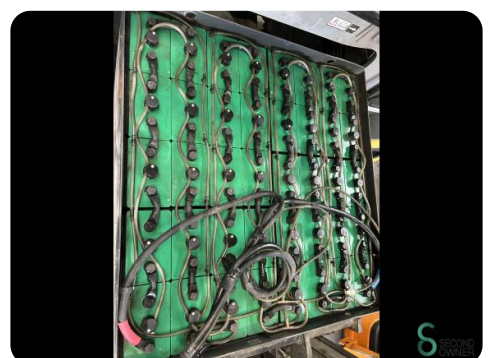
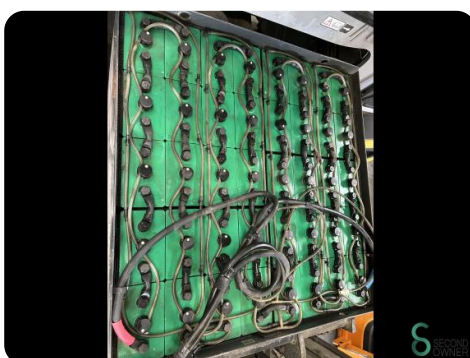
### Specifications

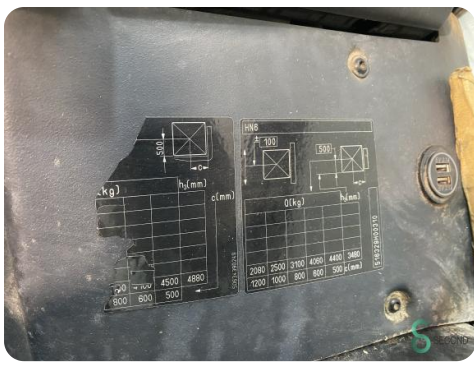
<b>Drive</b>	Elektric
<b>Capacity</b>	930Ah
<b>Brand/Type</b>	Hoppecke
<b>Battery voltage</b>	80V
<b>Battery year of construction</b>	2017
<b>Options</b>	Full cabin, Heating, Non-marking tires, Work lights

[For all product specifications click here](#)

### Dimensions

<b>Length</b>	2950 mm
<b>Width</b>	1400 mm
<b>Height</b>	2460 mm
<b>Weight</b>	7586 kg







Havenweg 6  
6603AS Wijchen

**T:** +31 611462913

**E:** [koen@secondowner.com](mailto:koen@secondowner.com)

**W:** <https://secondowner.com>