

## Pallet truck - Still SXH20



## Pallet truck - Still SXH20

WKH5.813



2000kg



Elektric



2019



5491

**Brand**

Still

**Model**

SXH20

**Year**

2019

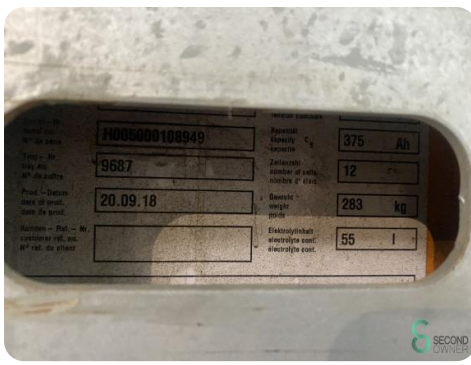
### Specifications

Drive	Elektric
Capacity	375Ah
Brand/Type	Hoppecke
Battery voltage	24V
Battery year of construction	2018
Fork length	1150mm

[For all product specifications click here](#)

### Dimensions

Length	1900 mm
Width	800 mm
Height	1500 mm
Weight	910 kg



Havenweg 6  
6603AS Wijchen

T: +31 611462913  
E: [koen@secondowner.com](mailto:koen@secondowner.com)  
W: <https://secondowner.com>

