

## Pallet truck - Still SXH20



## Pallet truck - Still SXH20

WKH5.894



Elektric



7001



2019

**Brand** Still

**Model** SXH20

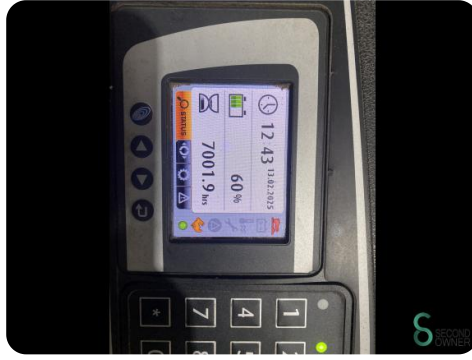
**Year** 2019

### Specifications

<b>Drive</b>	Elektric
<b>Capacity</b>	375Ah
<b>Battery voltage</b>	24V
<b>Battery year of construction</b>	2019
<b>Fork length</b>	1150mm
<b>Lifting capacity</b>	2000kg

### Dimensions

<b>Length</b>	1900
<b>Width</b>	800
<b>Height</b>	1500
<b>Weight</b>	910



Havenweg 6  
6603AS Wijchen

T: +31 6 11462913  
E: Koen@secondowner.com  
W: <https://secondowner.com>

