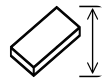


Vertical panel saw / wall saw - Striebig Standard 6220A



Vertical panel saw / wall saw - Striebig Standard 6220A

HOU.566



5300mm



4kW

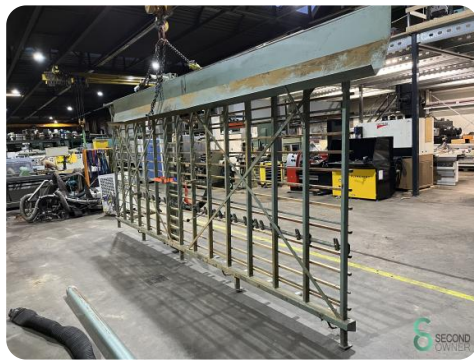
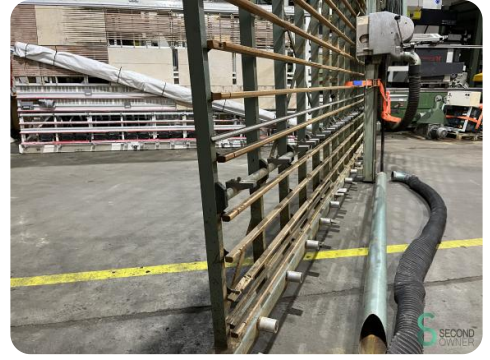
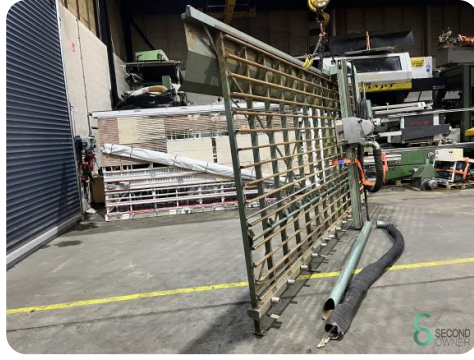
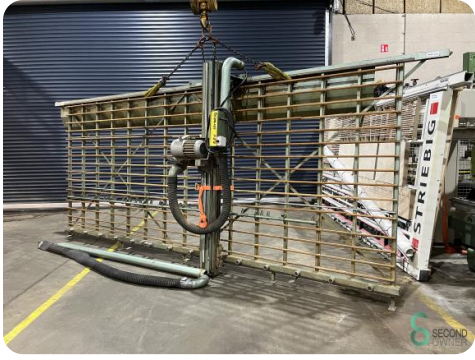
Brand	Striebig
Model	Standard 6220A
Year	

Specifications

Spindle speed max.	2800rpm
Motor power	4kW
Adjustable spindle speed	Geen
Spindle speed min.	2800rpm
Spindle speed control	N.v.t.
Max saw blade diameter	300mm

Dimensions

Length	6300
Width	1705
Height	2860
Weight	



Havenweg 6
6603AS Wijchen

T: +31 6 57668226
E: Glenn@secondowner.com
W: <https://secondowner.com>

