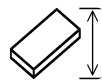


## Vertical panel saw / wall saw - Striebig Standard III 6220 A



## Vertical panel saw / wall saw - Striebig Standard III 6220 A

HOU.1906



5300mm



6kW



1996

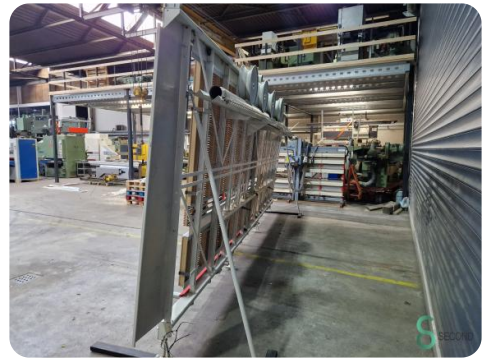
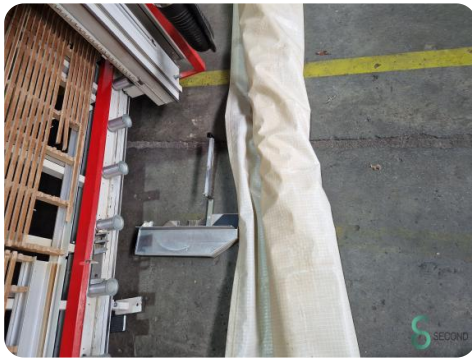
|              |                     |
|--------------|---------------------|
| <b>Brand</b> | Striebig            |
| <b>Model</b> | Standard III 6220 A |
| <b>Year</b>  | 1996                |

### Specifications

|                                 |         |
|---------------------------------|---------|
| <b>Voltage [V]</b>              | 400V    |
| <b>Spindle speed max.</b>       | 4750rpm |
| <b>Motor power</b>              | 6kW     |
| <b>Adjustable spindle speed</b> | Geen    |
| <b>Spindle speed min.</b>       | 4750rpm |
| <b>Spindle speed control</b>    | N.v.t.  |

### Dimensions

|               |      |
|---------------|------|
| <b>Length</b> | 6665 |
| <b>Width</b>  | 1810 |
| <b>Height</b> | 3015 |
| <b>Weight</b> | 840  |



Havenweg 6  
6603AS Wijchen

T: +31 6 57668226  
E: Glenn@secondowner.com  
W: <https://secondowner.com>

