

The Weinig Quattromat 22

Working width (with a tool diameter of 125 mm)	220 mm
Working height (with a tool diameter of 125 mm)	120 mm
Feed motor	1.1 KW (1,5 HP)
Motor rating, horizontal spindles	each 4 KW (5.5 HP)
Motor rating, vertical spindles	5.5 KW (7.5 HP)
Spindle speed	6000 r. p. m.
Spindle diameter	40 mm
Minimum tool diameter	100 mm
Maximum tool diameter, 1st bottom and vertical spindle	125 mm
Maximum tool diameter, top spindle	140 mm
Feed speed, infinitely variable	6 to 12 m/min
Feed rollers, hardened, chromium-plated, diameter	140 mm
Feed roller width	50 mm
Adjustment range of straightening table and edge-jointing fence	each 10 mm
Length of straightening table	2 m
Operating voltage	380 V (50 cy)
Reverse feed	
Inching button for feed „forward“	
Safety cover folding up	
Driven roller in the outfeed table	
Chainless cardan feed	
Spindle adjustment through mechanical digital read-outs for left and top spindle	

(Subject to technical alterations)

Extras

A.T.S. computer setting
Setting device for planer heads
Motor capacity up to 11 KW (15 HP)
Feed rollers, pneumatic
Brake motors for feed and spindles
Lateral and top pressure rollers
Feed roller in front of straightening spindle
Electrical „up-down“ adjustment for top spindle
Electrical width adjustment for left spindle
And much more!



Ask Weinig.

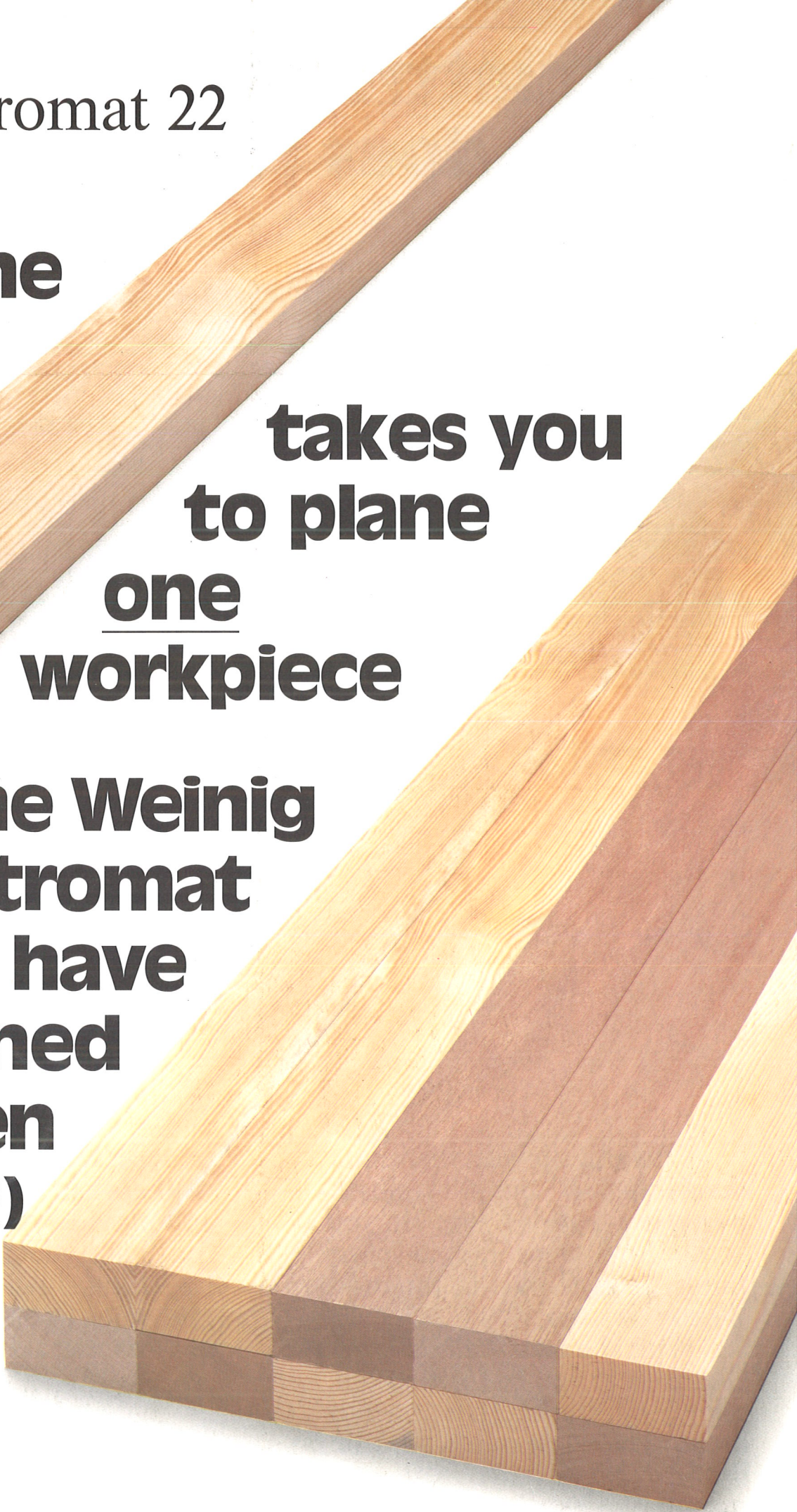
Michael Weinig AG, Weinigstrasse 2/4, D-6972 Tauberbischofsheim
Telephone (0) 93 41/86-0, Telex 6 89 511
Telefax (0) 93 41/70 80, West Germany



Quattromat 22

**In the
time
it
takes you
to plane
one
workpiece**

**the Weinig
Quattromat
will have
machined
ten
(TEN!)**



The Quattromat. It planes all four sides of the timber in one pass. It does this ten times as fast. And, it's made by Weinig.



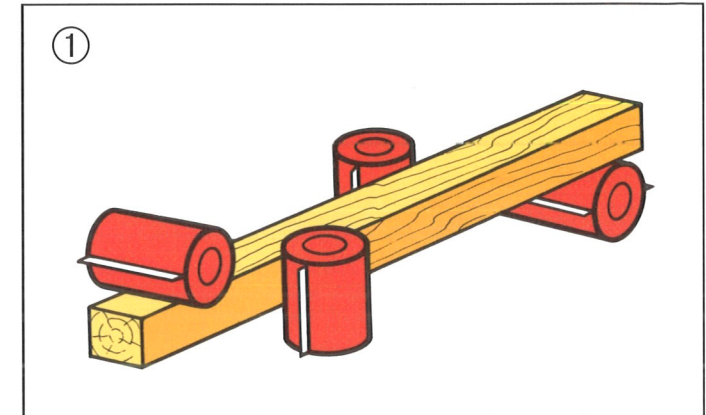
Why put up with laborious machining on your slow, single-purpose machines. Why do you accept long, unprofitable set-up times. Change over to the modern Weinig-System, now!

With the new Weinig Quattromat you can straighten, edge-joint, thickness and width dimension all in one pass. You no longer have to move from one machine to another, wasting time

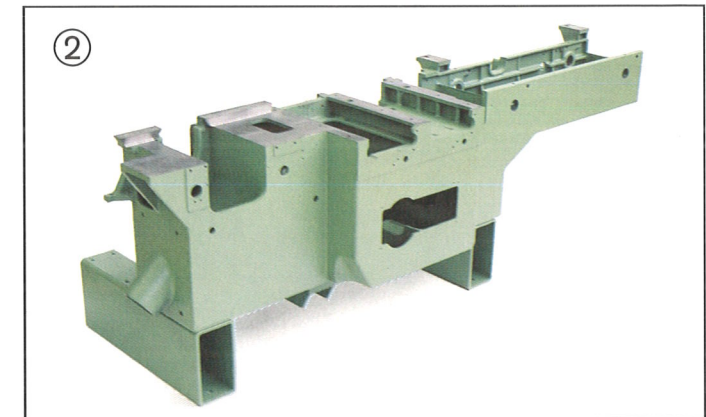
unnecessarily. Even unskilled workers can handle the machine and provide you with a surface finish and precision which can only be achieved when machining on all four sides at once.

The Weinig Quattromat incorporates the experience built into 30,000 four-siders installed worldwide. Nobody can offer you that special know-how and that made-in-Germany quality.

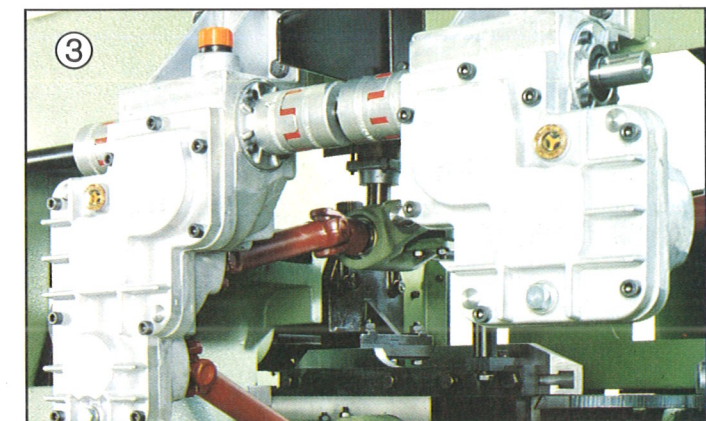
Of course, you could go on with your old, single-purpose machines for another one or two years. But why should you, when you can get these benefits from the Quattromat, now:



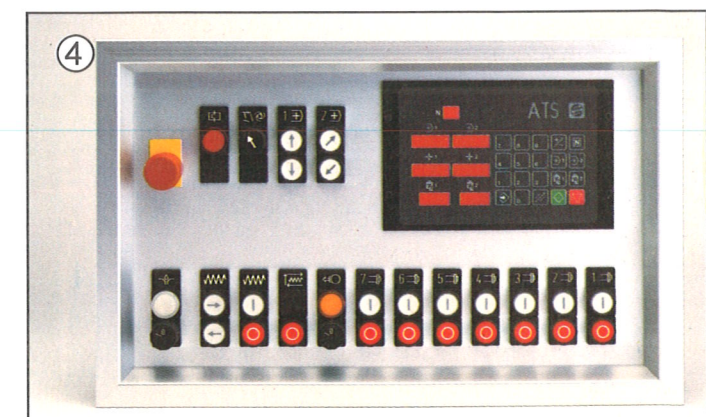
① Four spindles machine the workpiece in one pass simultaneously: from below, right, left and above.



② Cast-iron construction! Only a heavy, cast-iron body provides the stability for the precision which has made Weinig famous in the woodworking industry, worldwide.



③ Power transmission through Cardan shafts! Cardan shafts require only minimal maintenance because they are chainless. Cardan shafts guarantee feeding even with hard, wet, short and twisted timber.



④ Kill set-up time once and for all! The ATS-computer is available as an optional extra. Up to 98 workpiece dimensions can be entered in the programme and be called up at the push of a button. And the first workpiece through the machine is perfect!