

## Horizontal lathes - WMW DP1 / S3 x 4000mm



## Horizontal lathes - WMW DP1 / S3 x 4000mm

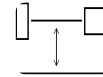
**MET8.044**



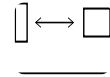
Conventional



55.0



1000



4000

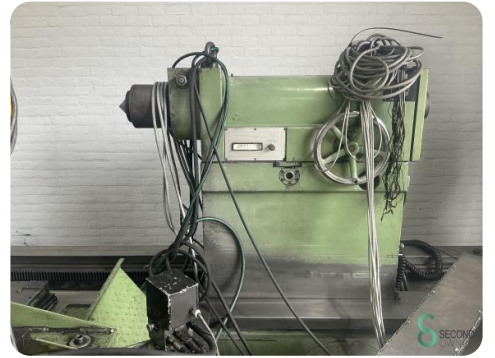
**Brand** WMW  
**Model** DP1 / S3 x 4000mm  
**Year**

### Specifications

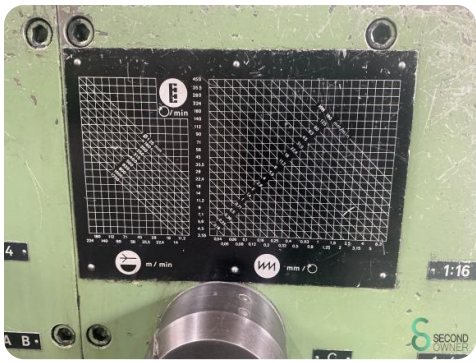
<b>Power [kW]</b>	55.0
<b>Options</b>	Digital readout
<b>Type of digital readout</b>	Acu-Rite 3-A
<b>Distance between centres [mm]</b>	4000
<b>Centre height [mm]</b>	1000
<b>Drive system</b>	Conventional

### Dimensions

<b>Length</b>	5400 mm
<b>Width</b>	2600 mm
<b>Height</b>	2550 mm
<b>Weight</b>	15000 kg







Havenweg 6  
6603AS Wijchen

T: +31 657359756  
E: [lukas@secondowner.com](mailto:lukas@secondowner.com)  
W: <https://secondowner.com>

