

Draaderodeermachine - Charmilles Robofil 2030 SI-TW



Draaderodeermachine - Charmilles Robofil 2030 SI-TW

MET6.652



2001



CNC

Merk Charmilles

Model Robofil 2030 SI-TW

Bouwjaar 2001

Specificaties

Model	tribe_selection_list s.model_1.Draade rodeermachine
--------------	---

Besturing	CNC
------------------	-----

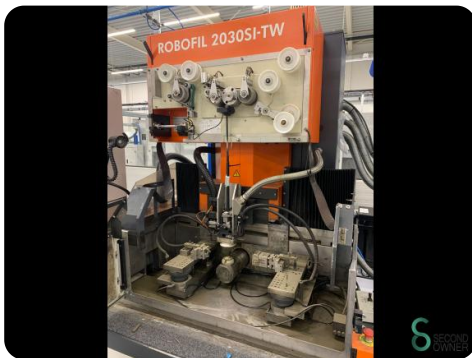
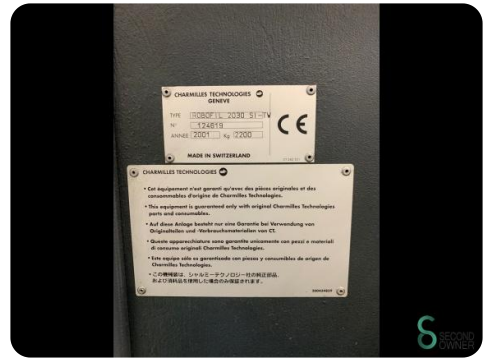
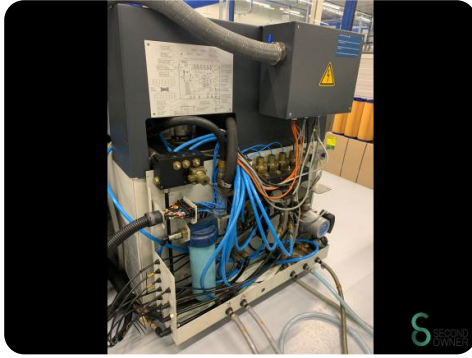
Afmetingen

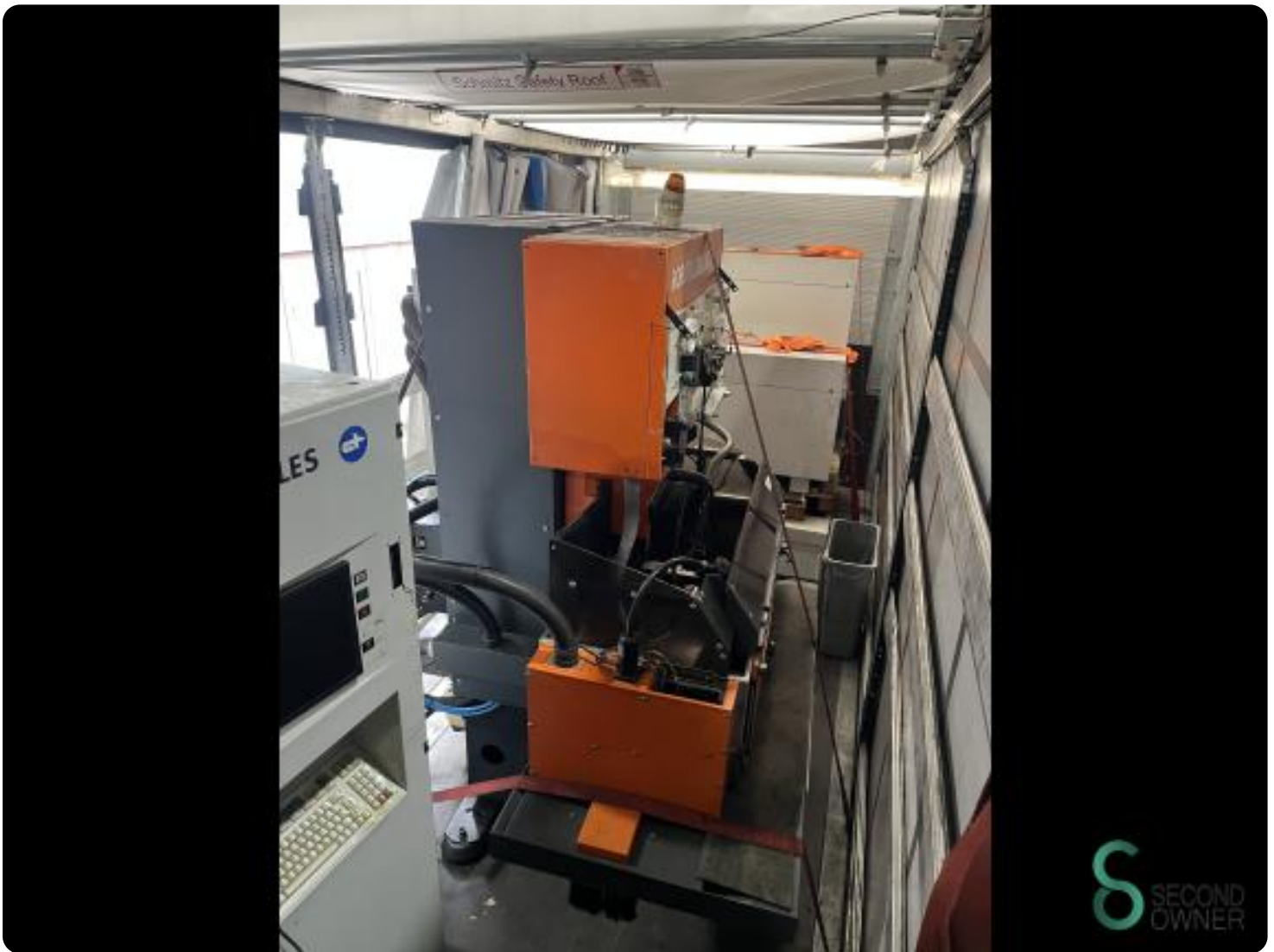
Lengte	3700
---------------	------

Breedte	2400
----------------	------

Hoogte	2600
---------------	------

Gewicht	4000
----------------	------







Havenweg 6
6603AS Wijchen

T: +31 6 14832789
E: Bram@secondowner.com
W: <https://secondowner.com>