

Reachtruck - Jungheinrich ETV-Q 25



Reachtruck - Jungheinrich ETV-Q 25

WKH.4645



2500kg



8000mm



Elektrisch



2010



4943

Merk Jungheinrich

Model ETV-Q 25

Bouwjaar 2010

Specificaties

Aandrijving Elektrisch

Capaciteit 775Ah

Accu test resultaat 53%

Merk/Type Battec 5 PZS

Accu spanning 48V

Bouwjaar batterij 2017

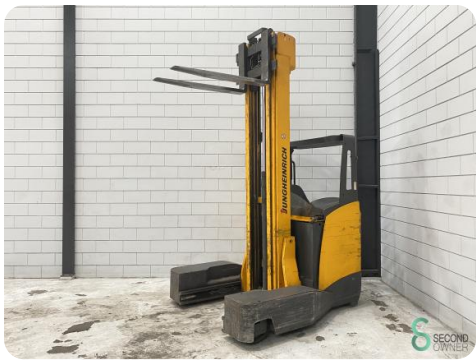
Afmetingen

Lengte 2100

Breedte 1750

Hoogte

Gewicht 4267



ETV Q25

91064885	6000Z	2010
2500 kg	600 mm	
48 V	6.9 kW	
3281 kg	860/986 kg	

Jungheinrich AG, 22047 Hamburg, Germany
JUNGHEINRICH

CE



Serial-Nr. 91064885

HH3	8000	1870	1660	1500	Q[kg]
HH2	6500	2260	2010	1820	
HH1	4800	2500	2230	2010	

H[mm]

600	700	800	Q[mm]
-----	-----	-----	-------



Serial-Nr. 91064885

HH3	8000	1870	1660	1500	Q[kg]
HH2	6500	2260	2010	1820	
HH1	4800	2500	2230	2010	

H[mm]

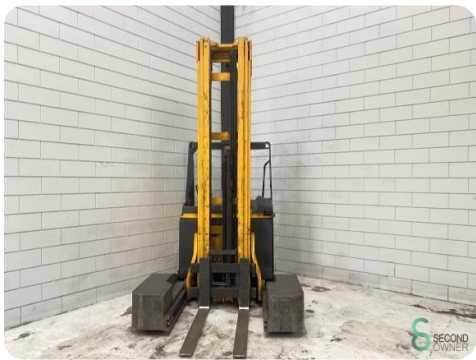
600	700	800	Q[mm]
-----	-----	-----	-------



Battec
Batterie-Vertrieb & Service GmbH
www.battec.de
Telefon 02 22 35 955 84 34 • Telefax 02 22 35 955 84 55

Typ: 75F12
Nennspannung: 48 V
Nennleistung: 6,9 kW
Ladestrom: 25 A
Ladungszustand: 25 %
Lichtgewicht: 860 kg
Gesamtgewicht: 986 kg

! !
! !
! !
! !
! !
! !



Ubat=47.5 Ustop=40.8
I=158 Ah=0413 T=21.4

SET START/STOP

BATTEC





Havenweg 6
6603AS Wijchen

T: +31 6 11462913
E: Koen@secondowner.com
W: <https://secondowner.com>

