

Heftruck - Still RX20-16



Heftruck - Still RX20-16

WKH.4882



Elektrisch



3450mm



1600kg



10308



2008

Merk Still

Model RX20-16

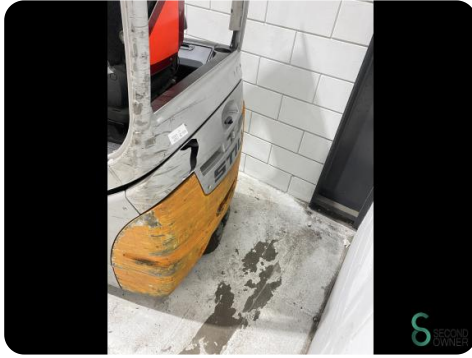
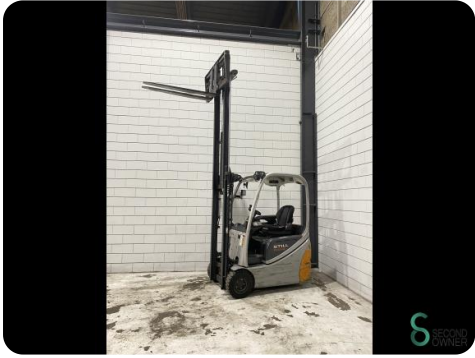
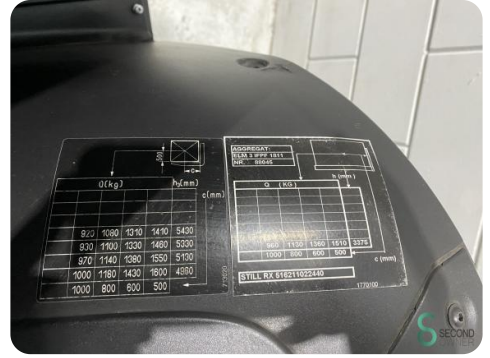
Bouwjaar 2008

Specificaties

Aandrijving	Elektrisch
Capaciteit	625Ah
Merk/Type	Marathon
Accu spanning	48V
Bouwjaar batterij	2018
Opties	Vrije-heffing, Werklampen

Afmetingen

Lengte	2000
Breedte	1150
Hoogte	2170
Gewicht	3000



STILL

Type-Modèle-Typ / Serial no.-No. de série-Serien-Nr. / year-année-Baujahr

RX 20-16 / 516211022440 / 2008

Rated capacity
Capacité nominale
Nenn-Tragfähigkeit

1600 kg

Unladen mass
Masse à vide
Laergewicht

2071 kg

Battery voltage
Tension batterie
Batteriespannung

48 V

Battery mass max.
Masse batterie *
Batteriegew. min.

929 kg

813 kg

Rated drive power
Puissance motr.nom.
Nenn-Antriebsleist.

9.0 kW

Ballast weight *
Poids additionnel
Zusatzgewicht

kg

CE

* see Operating Instructions
voir Mode d'emploi
siehe Betriebsanleitung

D-22113 Hamburg
Berzeliusstr. 10

 SECOND
OWNER

Havenweg 6
6603AS Wijchen

T: +31 6 11462913
E: Koen@secondowner.com
W: <https://secondowner.com>

 SECOND
OWNER