

Heftruck - Still RX50-15



Heftruck - Still RX50-15

WKH5.454



Elektrisch



5000mm



1500kg



1386



2003

Merk Still

Model RX50-15

Bouwjaar 2003

Specificaties

Aandrijving Elektrisch

Capaciteit 840Ah

Merk/Type Still

Accu spanning 24V

Bouwjaar batterij 2003

Opties Vrije-heffing,
Werklampen

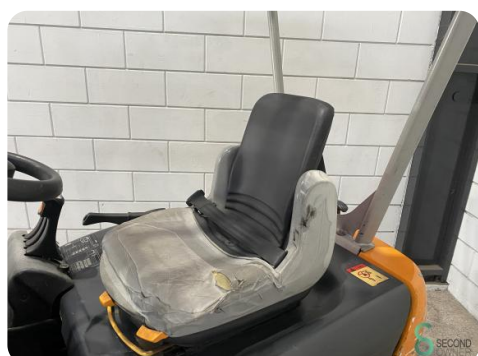
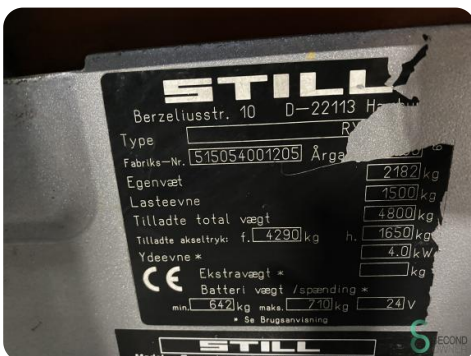
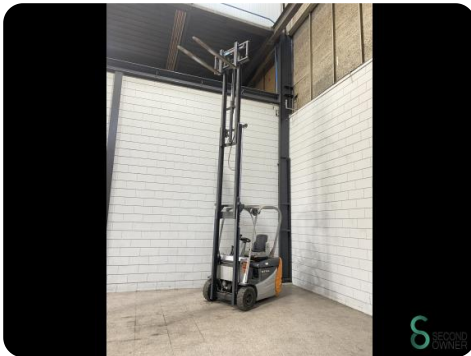
Afmetingen

Lengte 1900

Breedte 1100

Hoogte 2170

Gewicht 2826





Havenweg 6
6603AS Wijchen

T: +31 6 11462913
E: Koen@secondowner.com
W: <https://secondowner.com>