

## Vierzijdige schaafmachine - Weinig Unimat 500



## Vierzijdige schaafmachine - Weinig Unimat 500

HOU.2602



2006

**Merk** Weinig

**Model** Unimat 500

**Bouwjaar** 2006

### Specificaties

**Voltage [V]** 380

**Afzekering [A]** 80

### Afmetingen

**Lengte**

**Breedte**

**Hoogte**

**Gewicht**



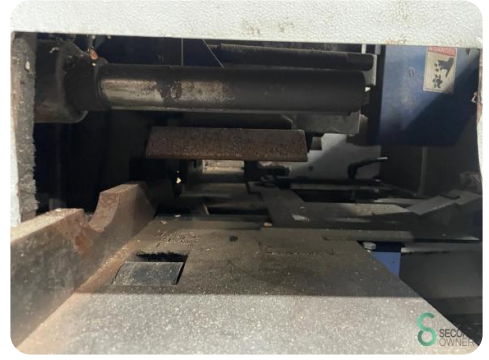
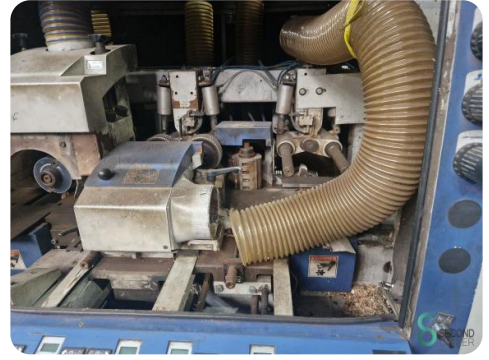
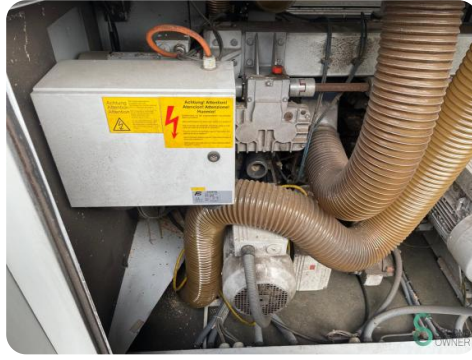
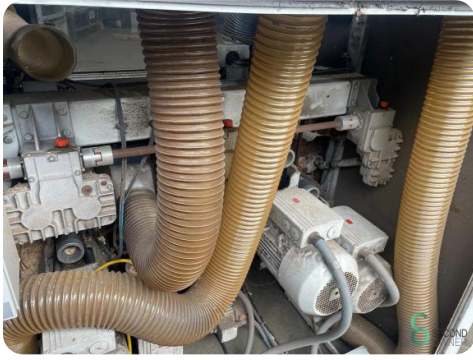
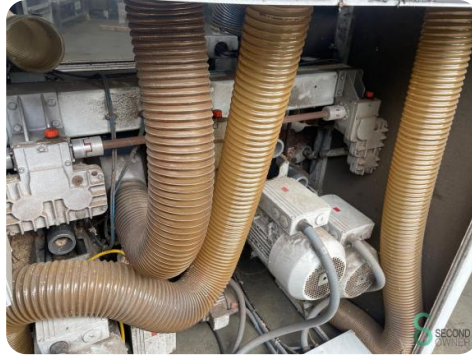
Modello No.	Numero della macchina	107665
Macchine Typ	Numero di fabbrica	U500
Machine type	Tipo della macchina	2006
Blaufräse	Tipo de la maquina	C07665
Year of construction	Anno di costruzione	
Stromaufnahme in	nr. del diagramma elettrico	
Number of circuit diagram	Numero de esquema del circuito	
Betriebsspannung	tensione di esercizio	3X400 v 50 Hz
Operating voltage	tensione de servizio	230 v 50 Hz
Steuerungsspannung	tensione di comando	110 v Hz
Control voltage	tensione di mando	-24 v Hz
		-5 v
Nennstrom großer Motor	corrente nominale motore più potente	27,5 A
Nominal current major powerful motor	corrente nominale motor más potente	7,4 A
Nennstrom	corrente nominale	80 A
Nominal current	tensione nominale	80 A
Hauptleistung	potenza principale	34 kW
max. force	potenza principal	
Leistung	potenza	
power	potencia	

**Michael Weing Aktiengesellschaft**  
Weingstraße 2/4, Postfach 1460, D-97934 Taubertsdorfheim

**Bestätigung**  
Schutzleitungssystem nach







**MICHAEL WEINIG AG**  
 MANUFACTURERS OF SPECIAL WOODWORKING MACHINERY  
 D-97941 TAUBERBISCHOFHEIM GERMANY  
 MODEL U 500 CONSTR. 2006 MACHING 07/2005  
 VOLTAGE (V) : 400 FREQUENCY (HZ) : 50  
 MADE IN FEDERAL REPUBLIC OF GERMANY





Havenweg 6  
6603AS Wijchen

**T:** +31 6 57668226  
**E:** Glenn@secondowner.com  
**W:** <https://secondowner.com>

